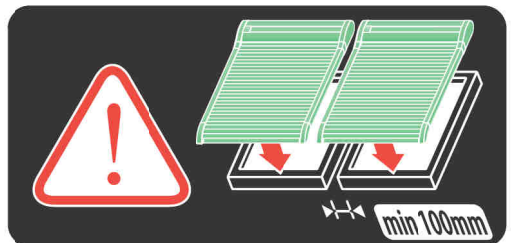
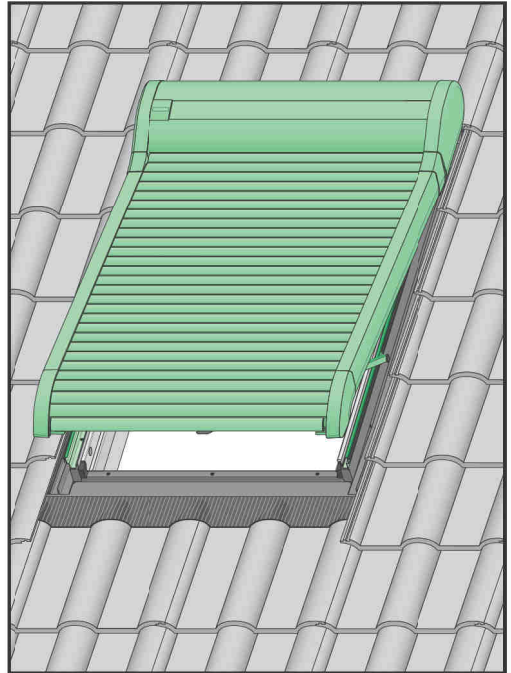
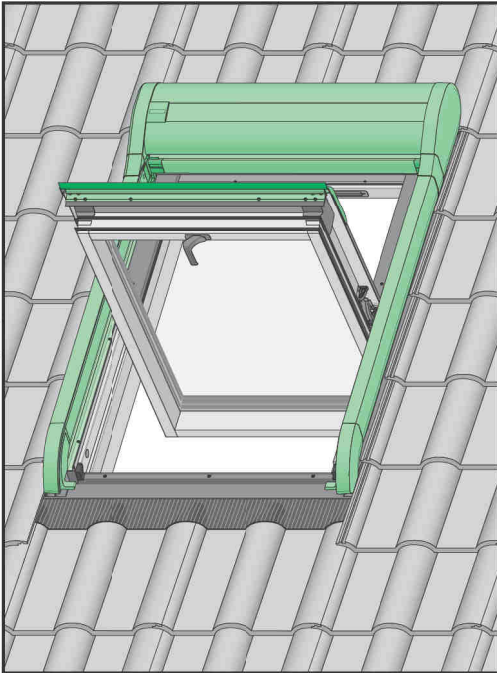


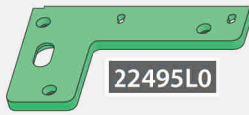
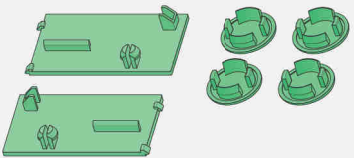
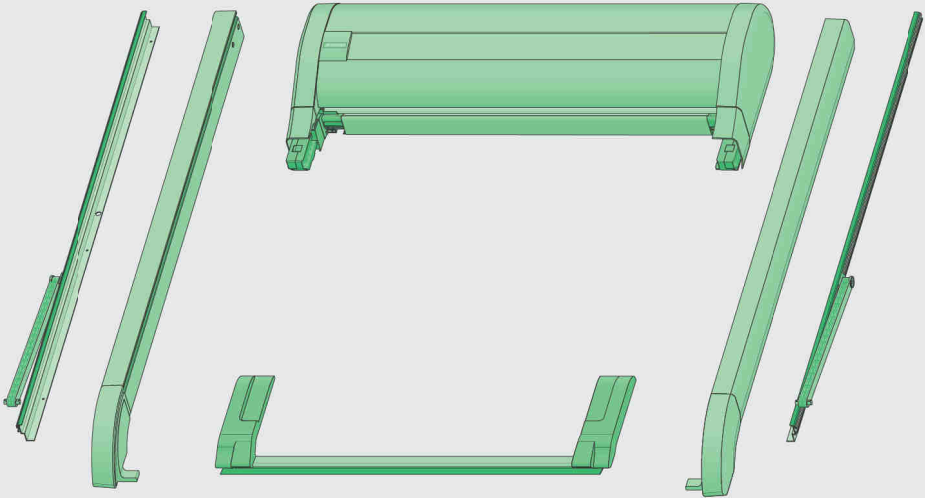


# ARZ Komfort Electro 230





Ø10mm



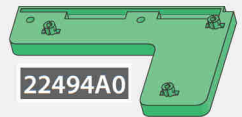
22495L0



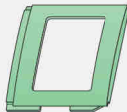
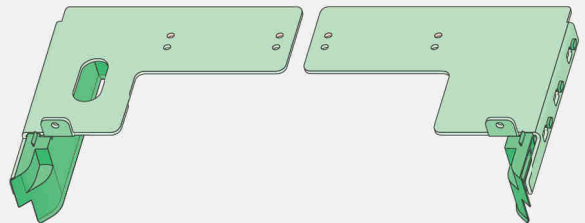
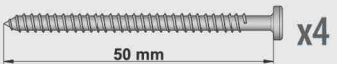
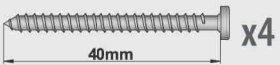
22495A0



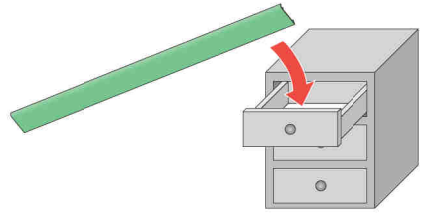
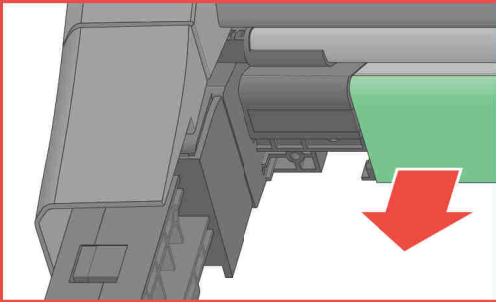
22494L0



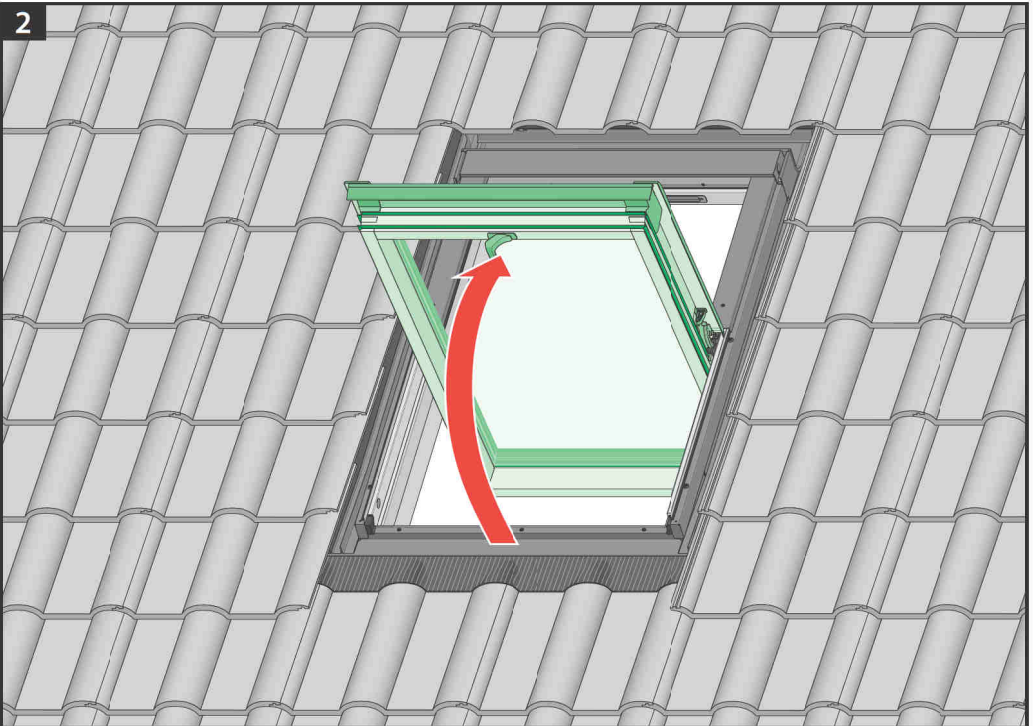
22494A0



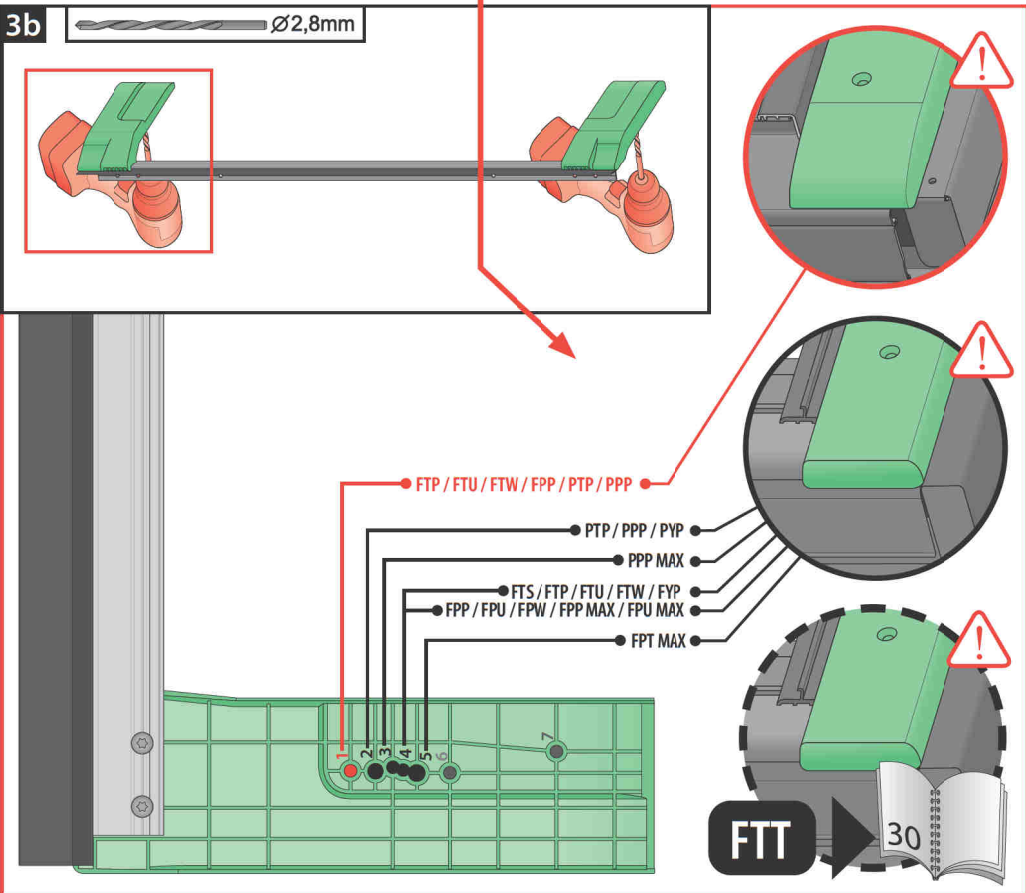
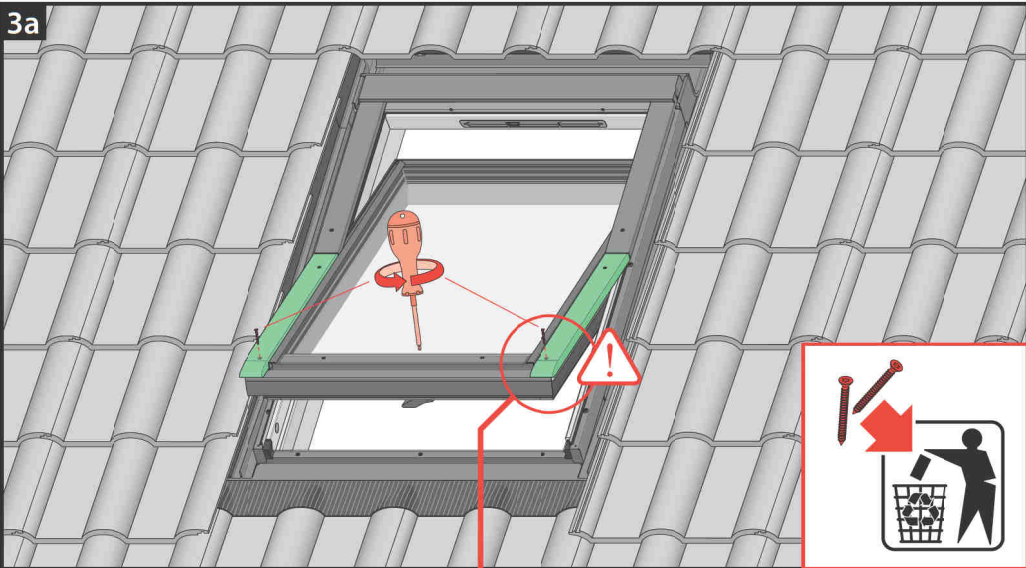
1

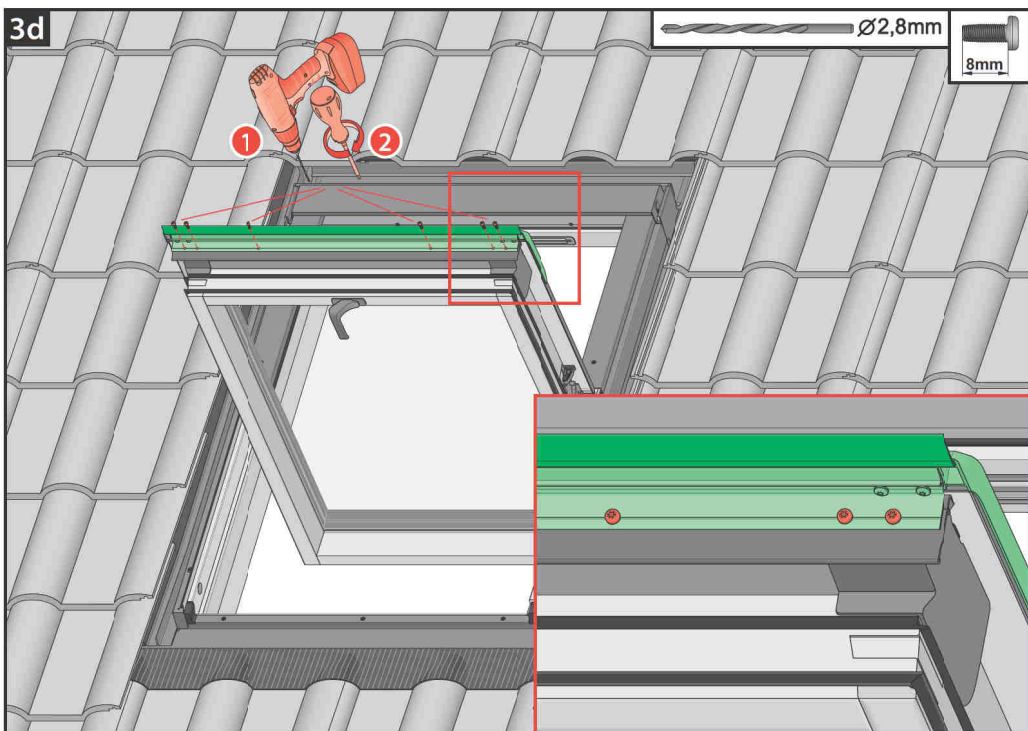
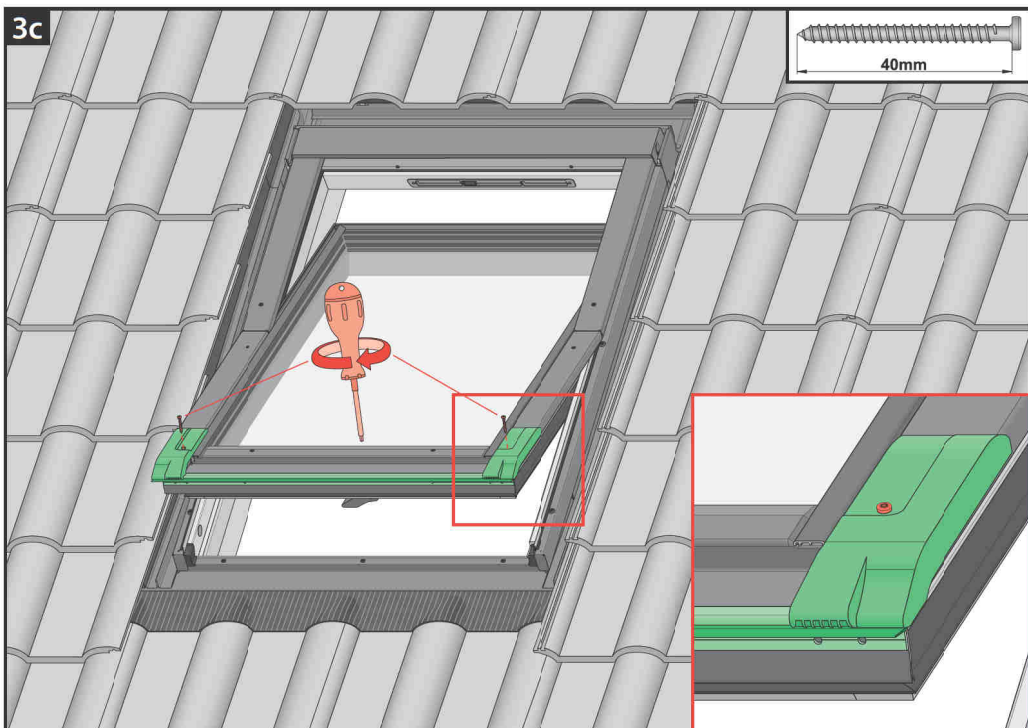


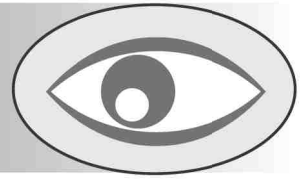
2



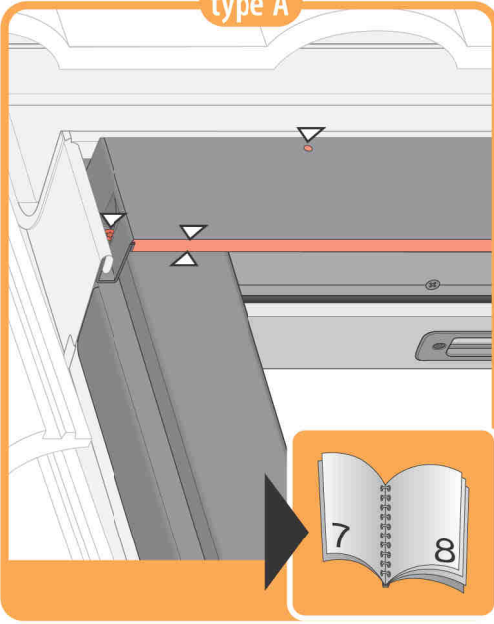
3



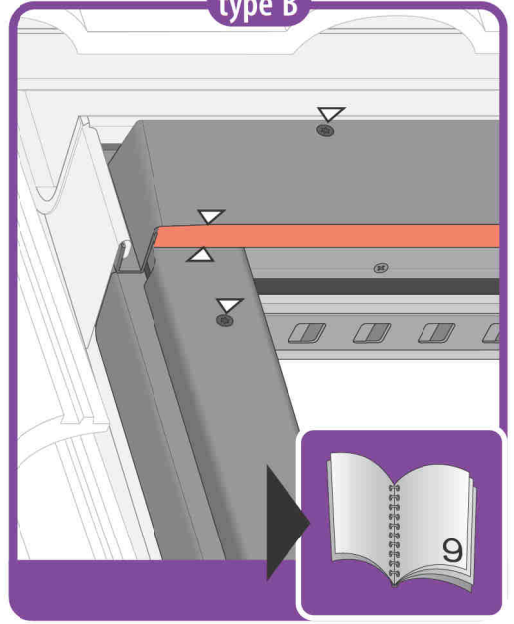




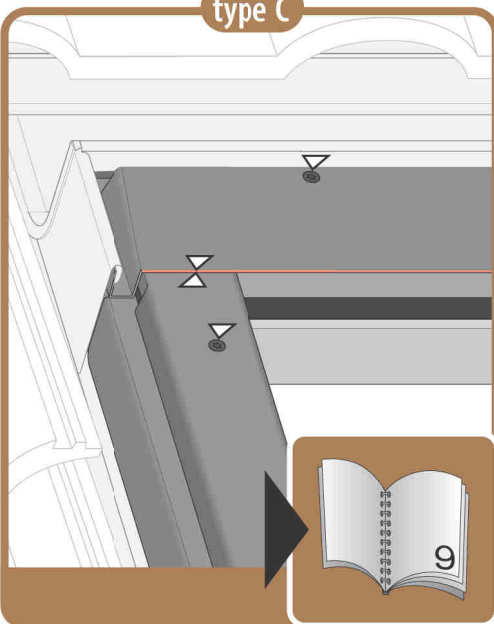
type A



type B



type C



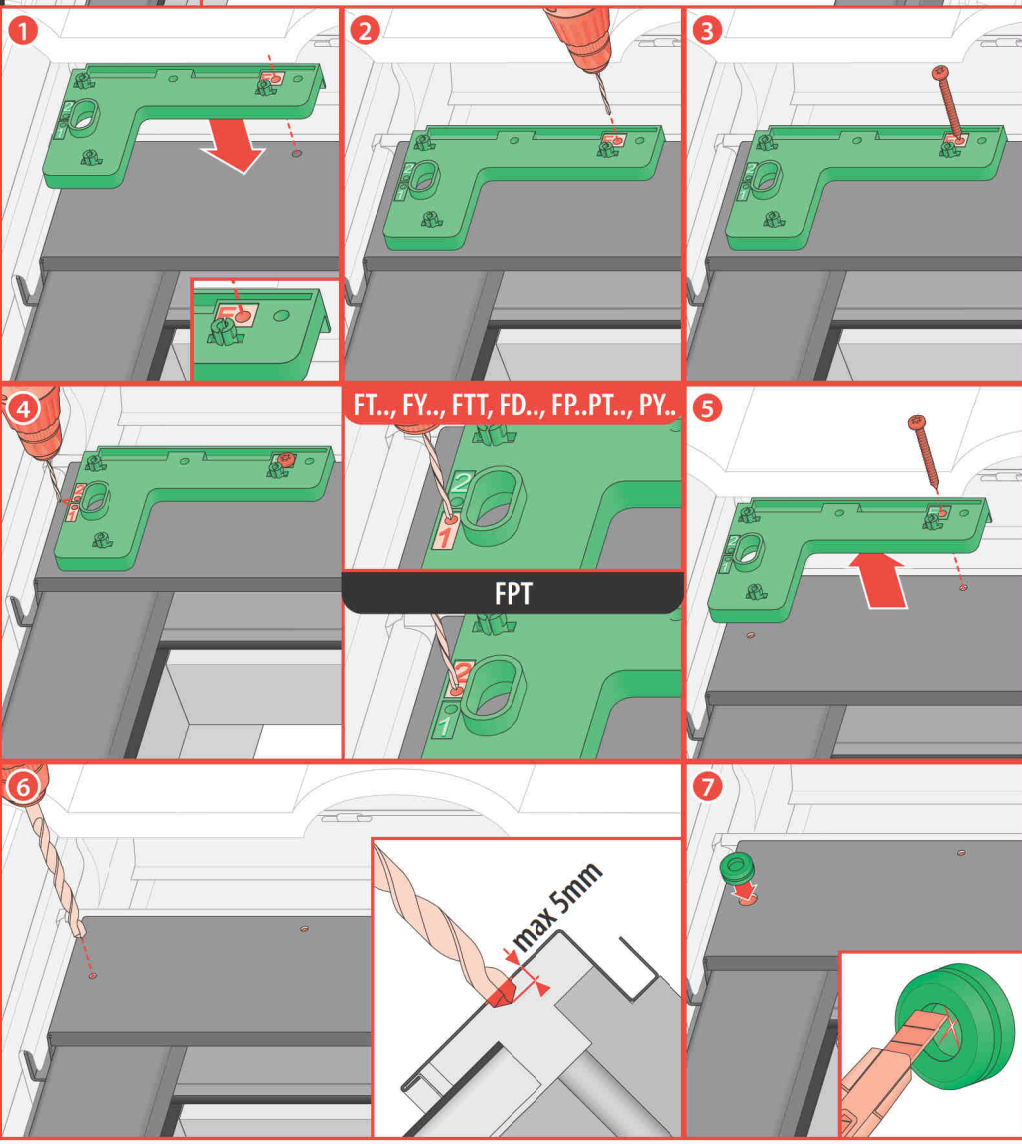
4a type A

Ø2,8mm

MAX 5mm Ø10mm

22494L0

50 mm

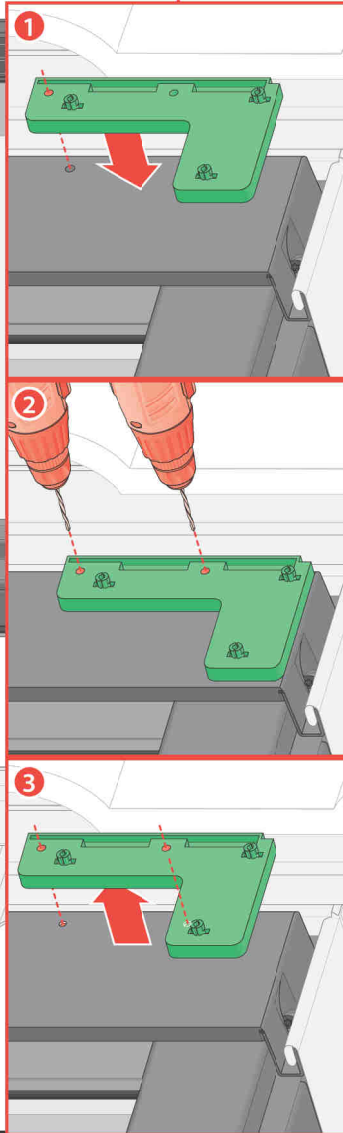
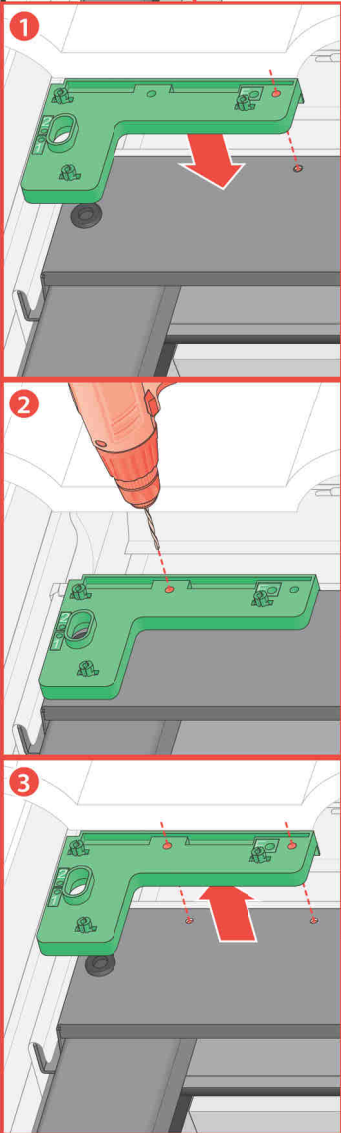


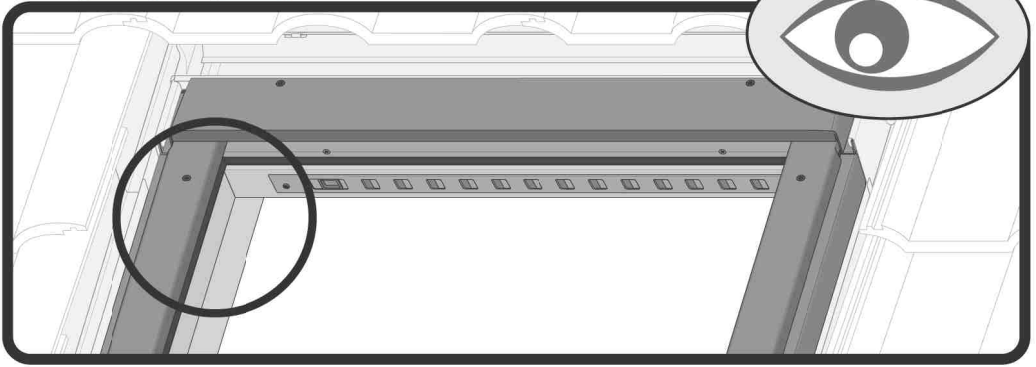
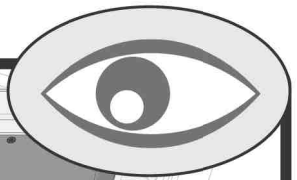
4b type A

Ø2,8mm

22494L0

22494A0

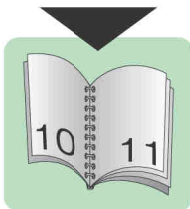




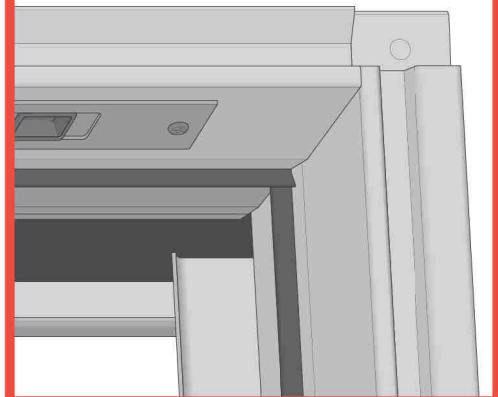
type X



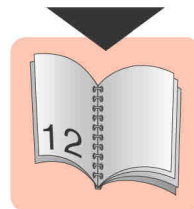
FTS, FTS-V, FTP, FTP-V, FYP, FYP-V  
FTT, FDY-V, FPP preSelect 2  
PTP, PTP-V, PYP, PYP-V



type Y



FTS, FTS-V, FTP, FTP-V, FYP, FYP-V  
FTT, FDY-V, FPP preSelect  
PTP, PTP-V, PYP, PYP-V



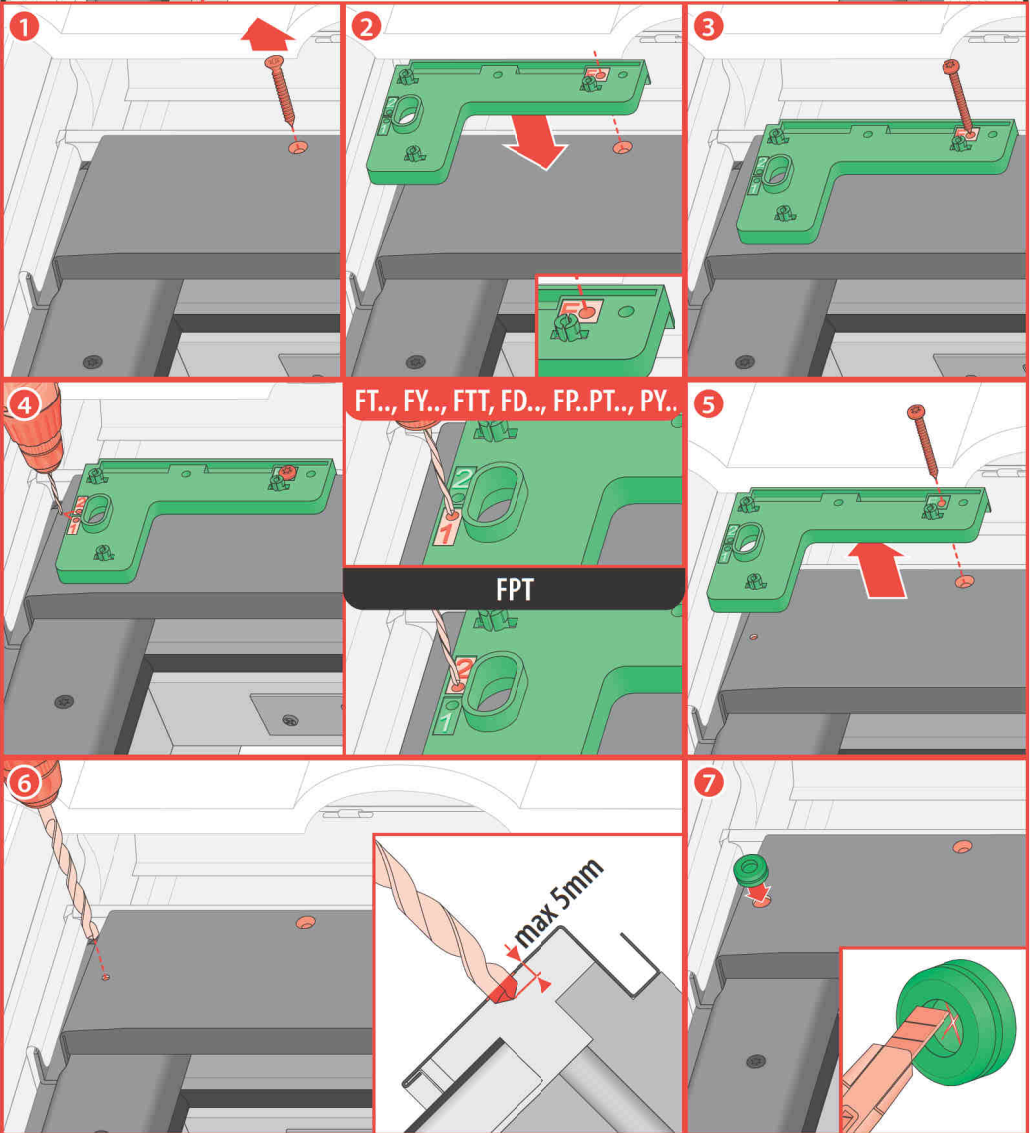
4b type X

Ø2,8mm

MAX 5mm Ø10mm

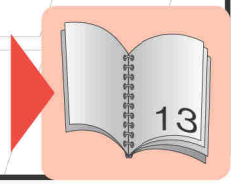
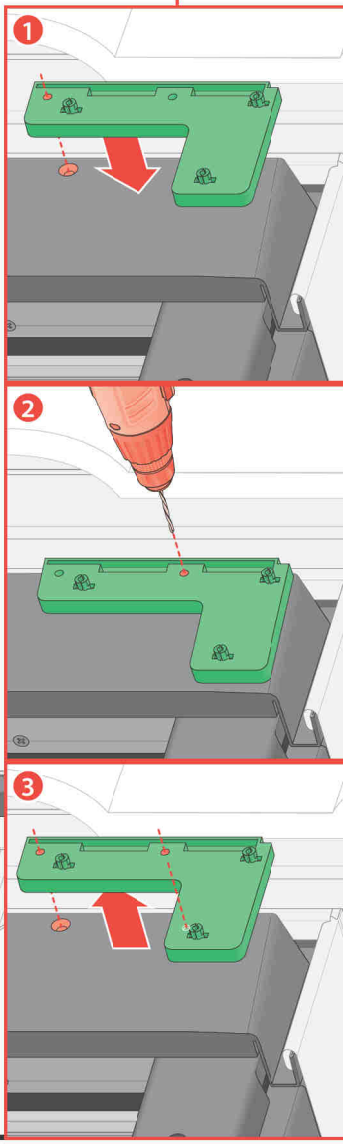
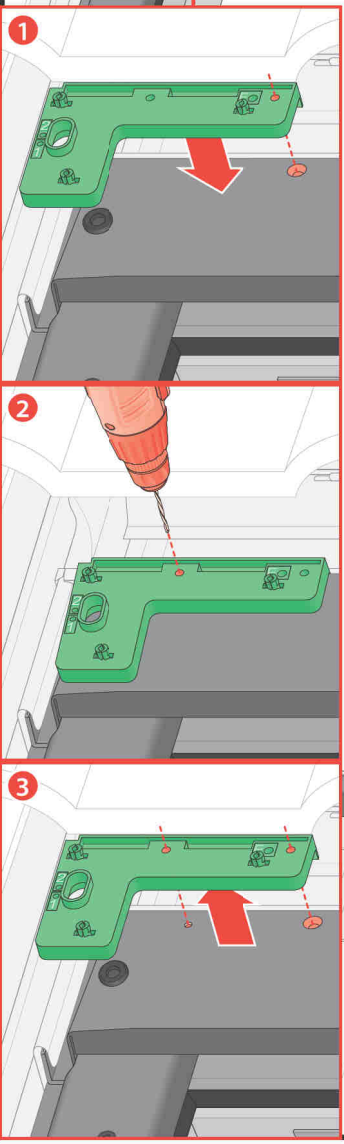
22494L0

50 mm



22494L0

22494A0



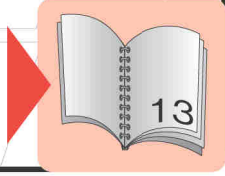
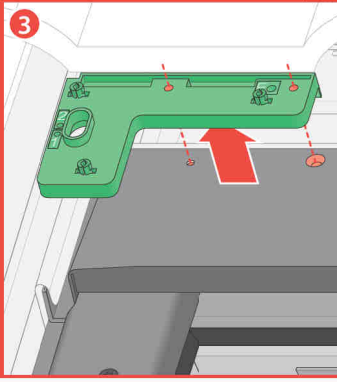
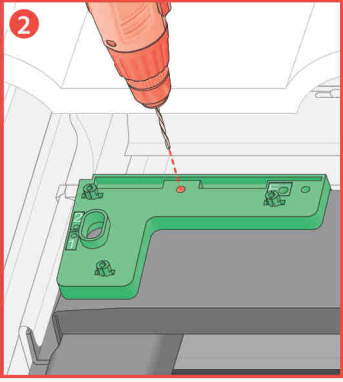
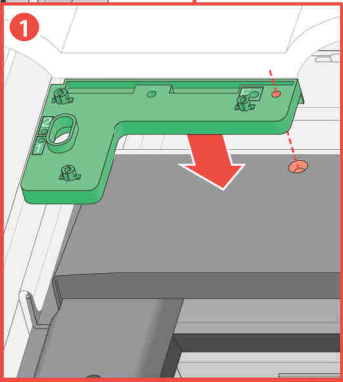
4a

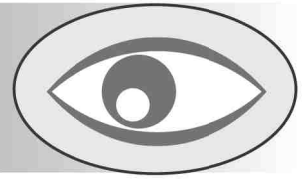
type Y

Ø2,8mm

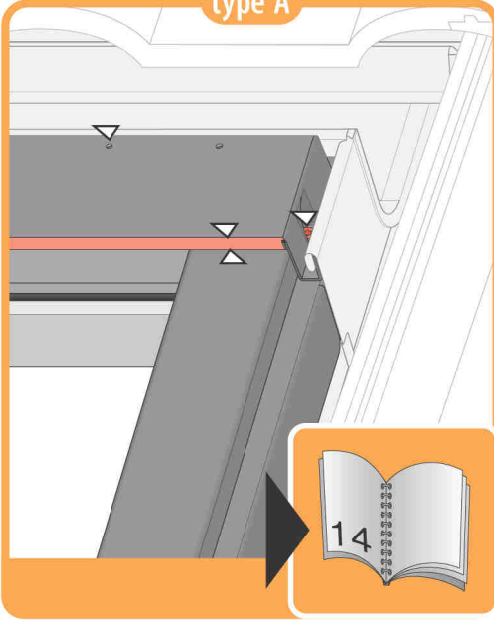
22494L0

22494A0

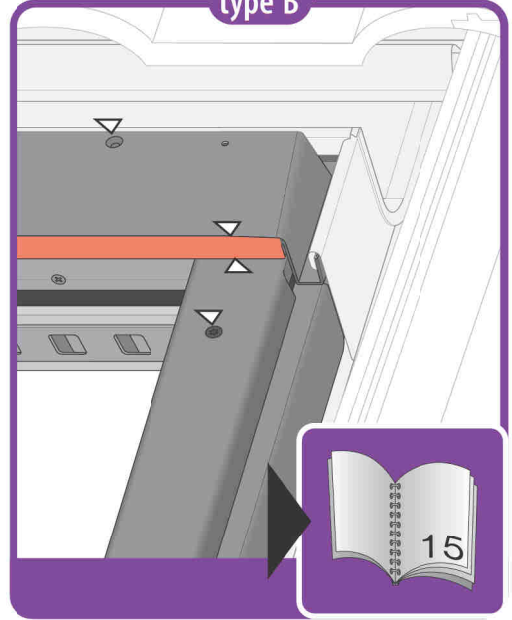




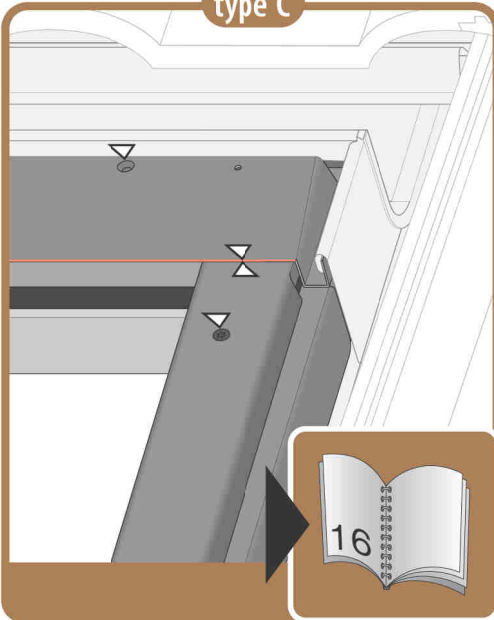
type A



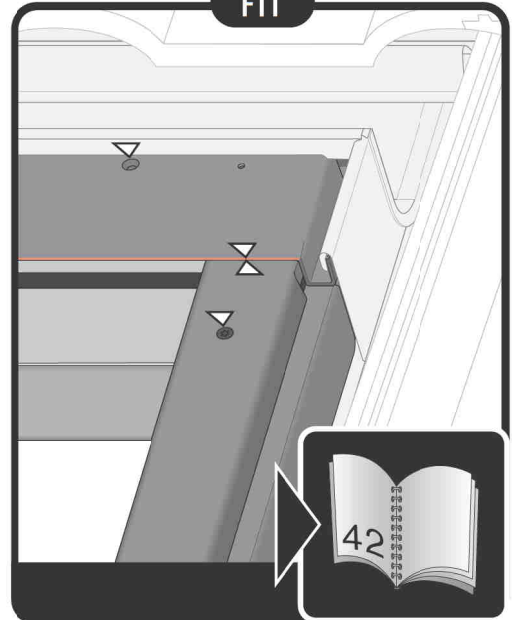
type B



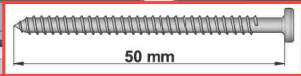
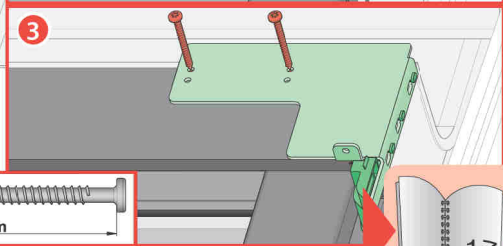
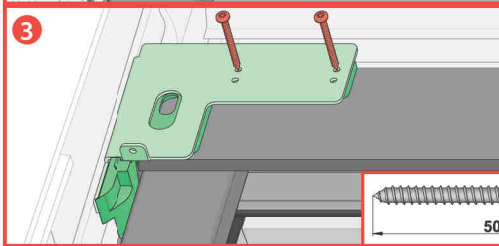
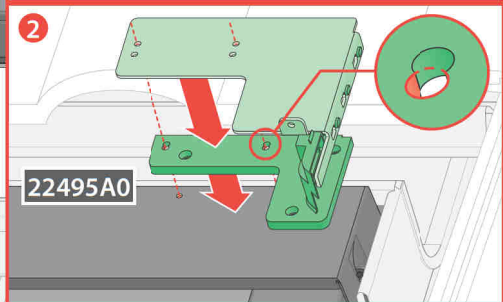
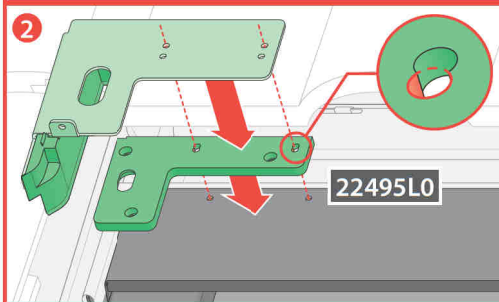
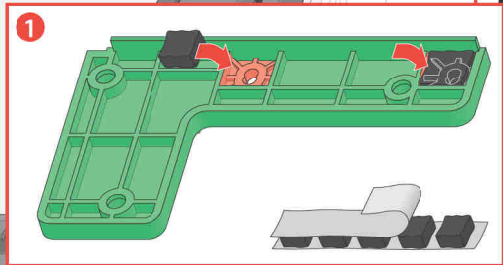
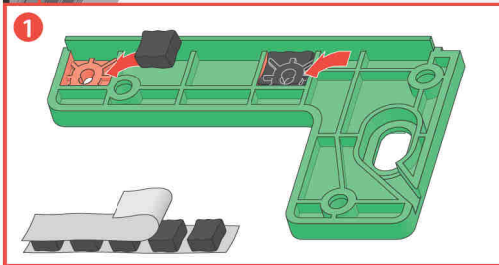
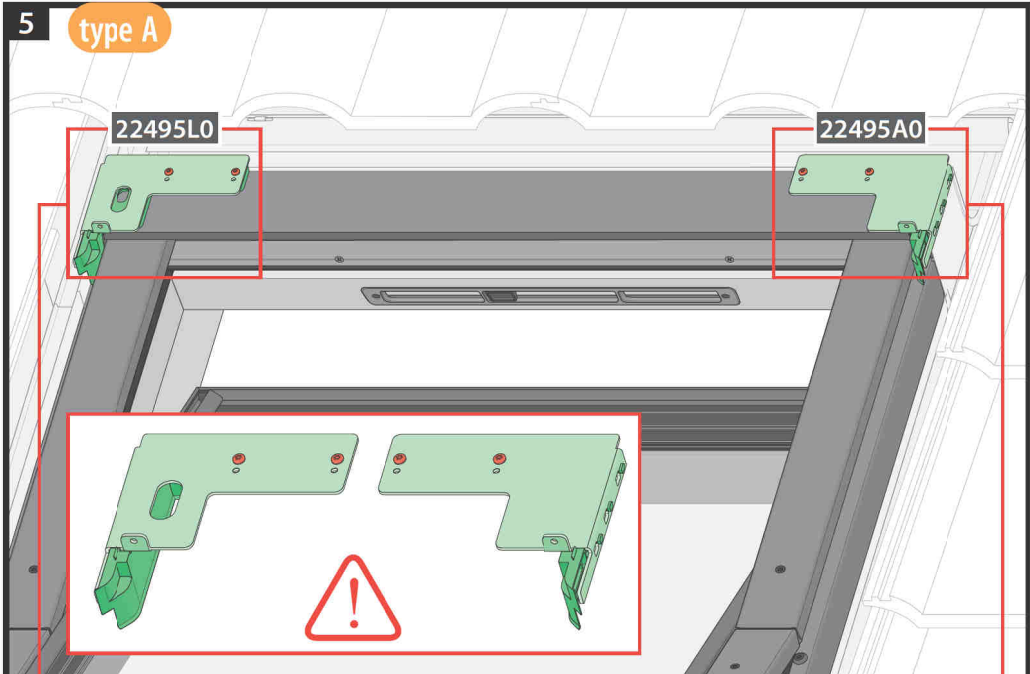
type C



FTT



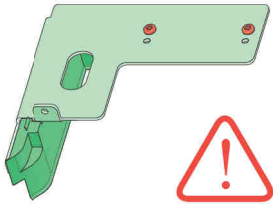
5 type A



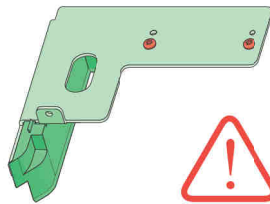
22495L0

22495A0

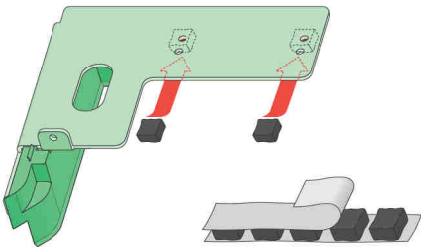
FTS / FTP / FPP / FPP MAX  
FYP / FTP MAX



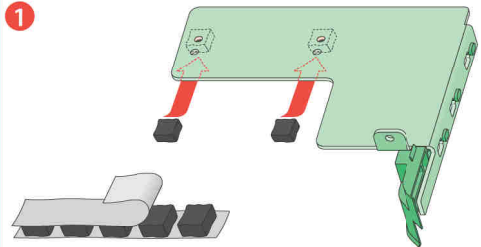
PTP / PPP / PPP MAX  
PYP



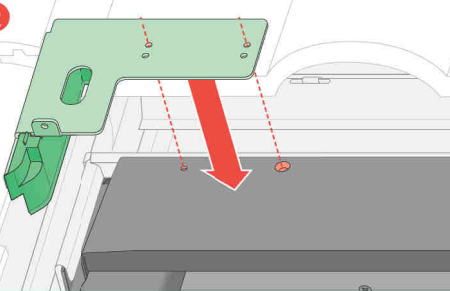
1



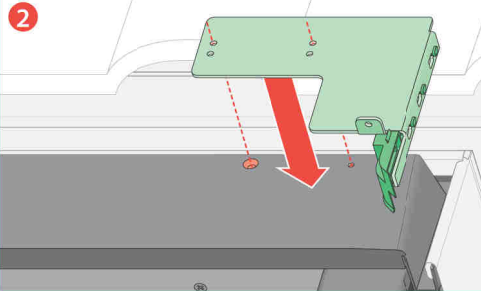
1



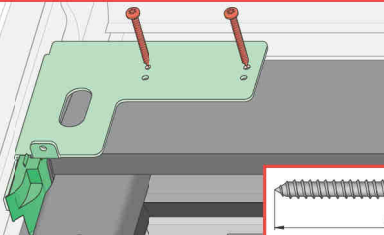
2



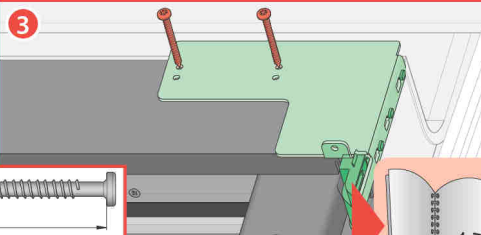
2



3



3



5 type C

22495L0

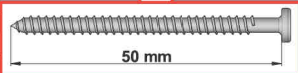
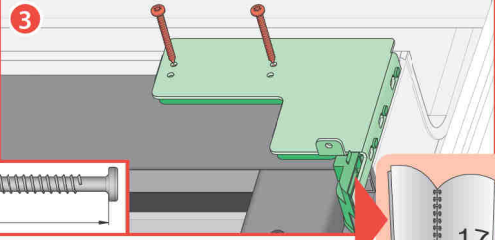
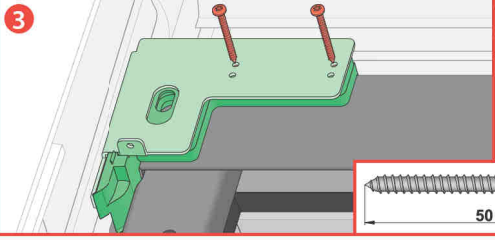
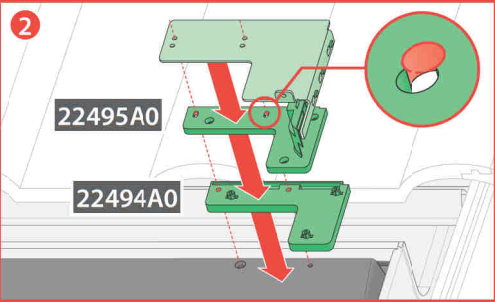
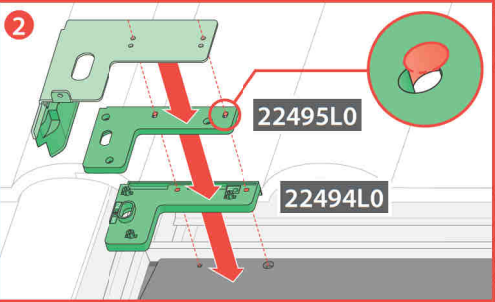
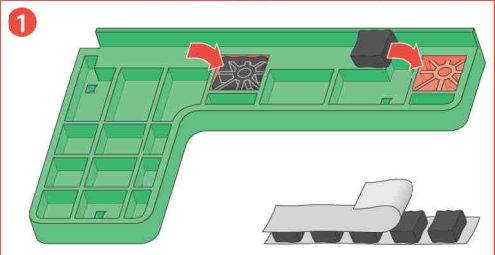
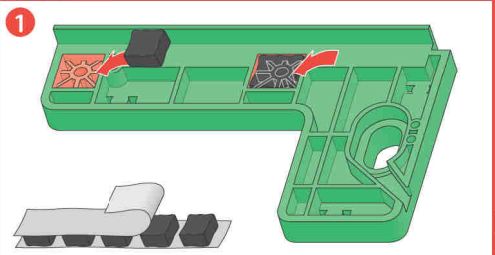
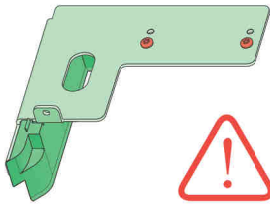
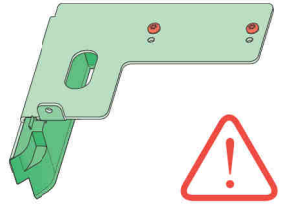
22494L0

22495A0

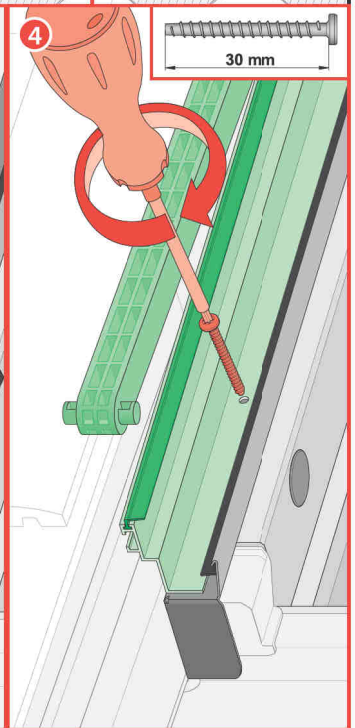
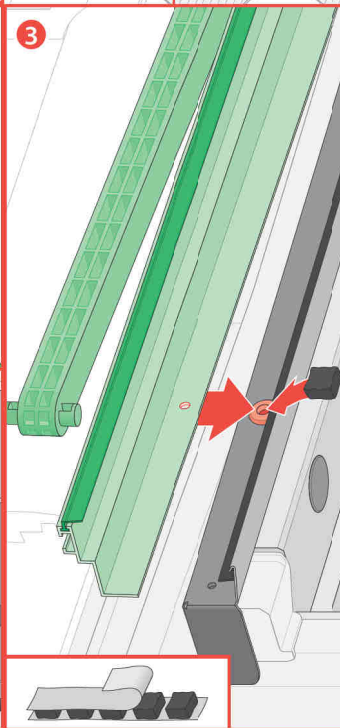
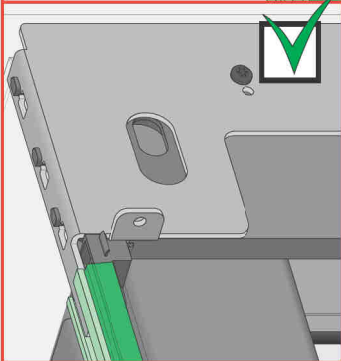
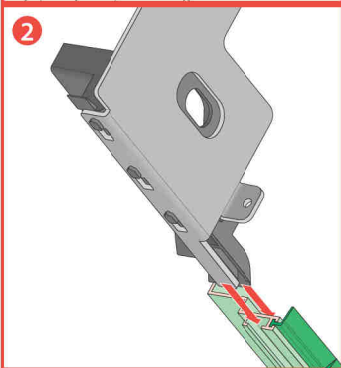
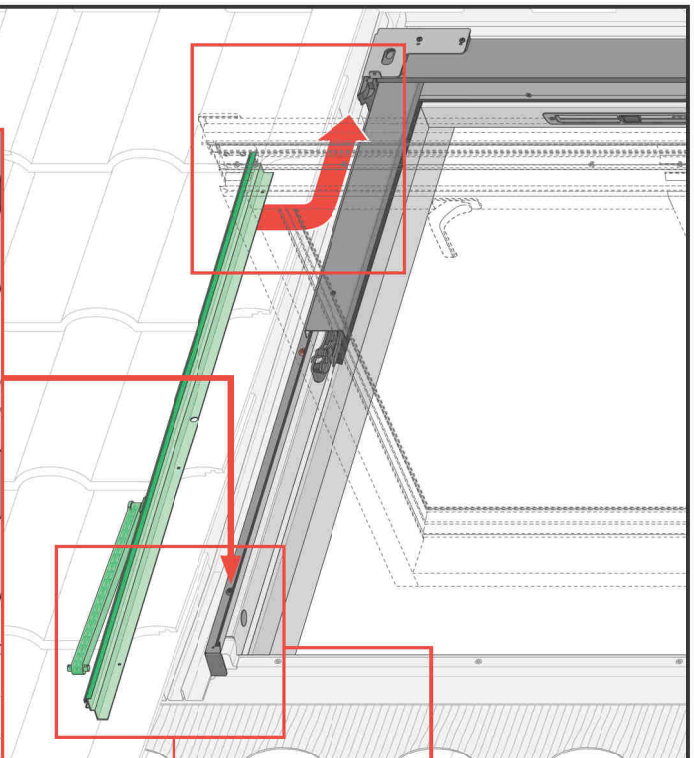
22494A0

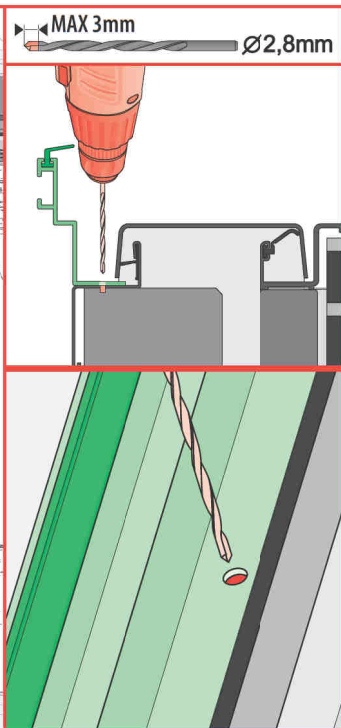
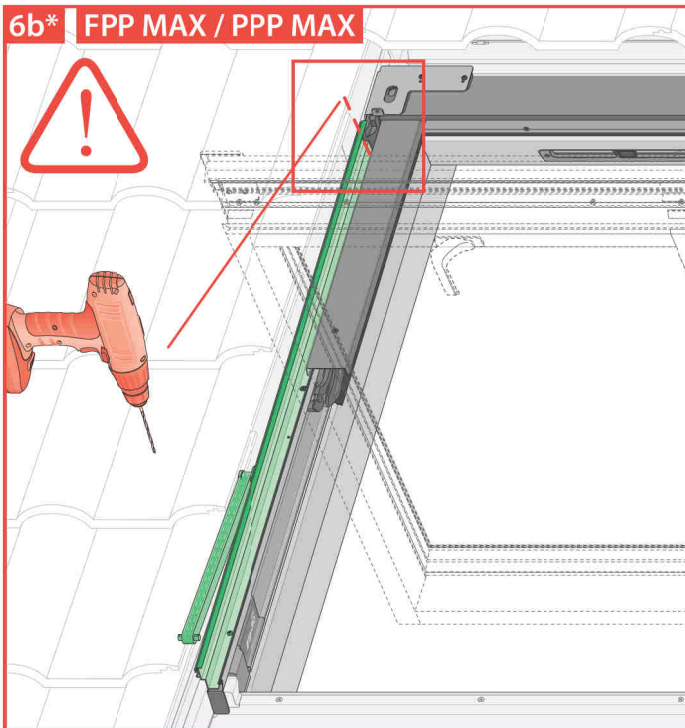
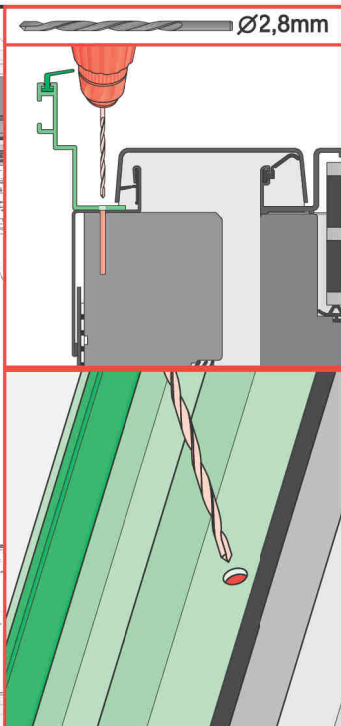
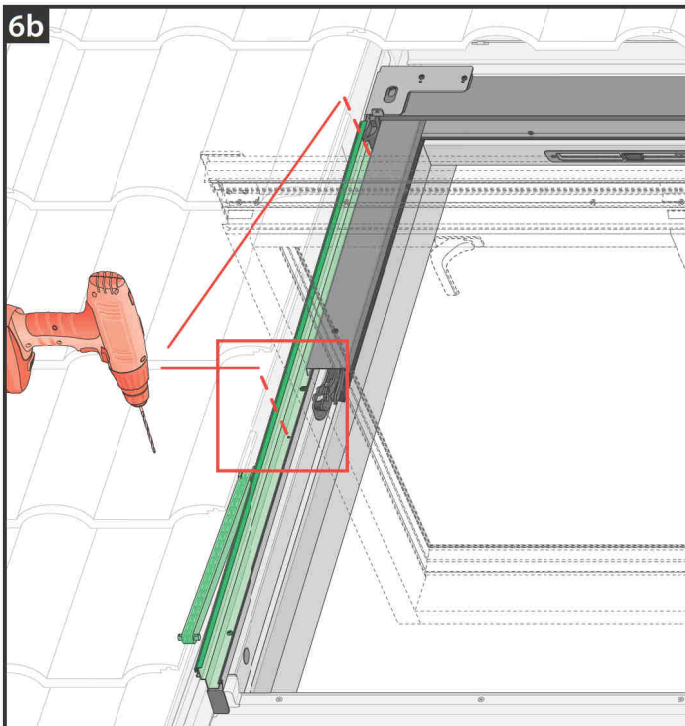
FTS / FTP / FPP / FPP MAX  
FYP / FTP MAX

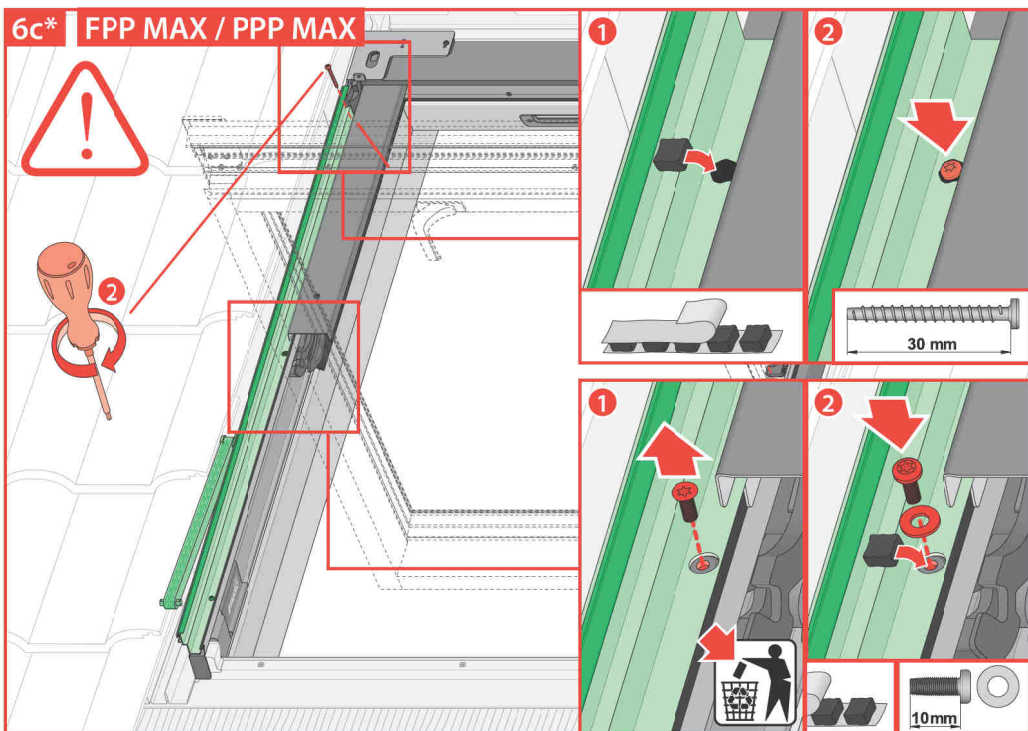
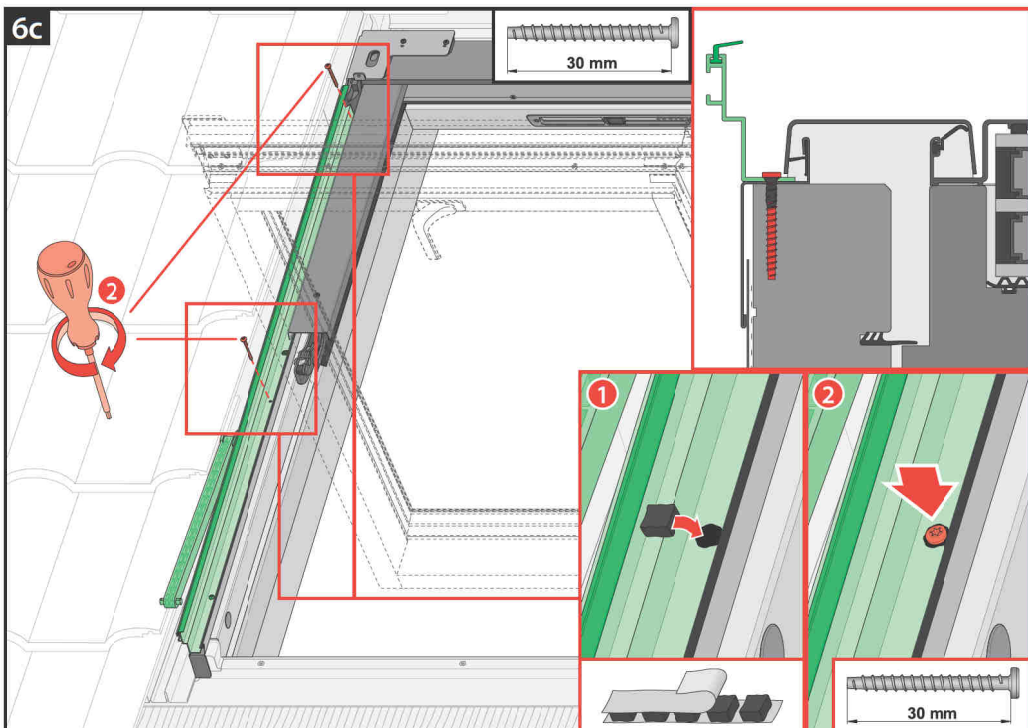
PTP / PPP / PPP MAX  
PYP

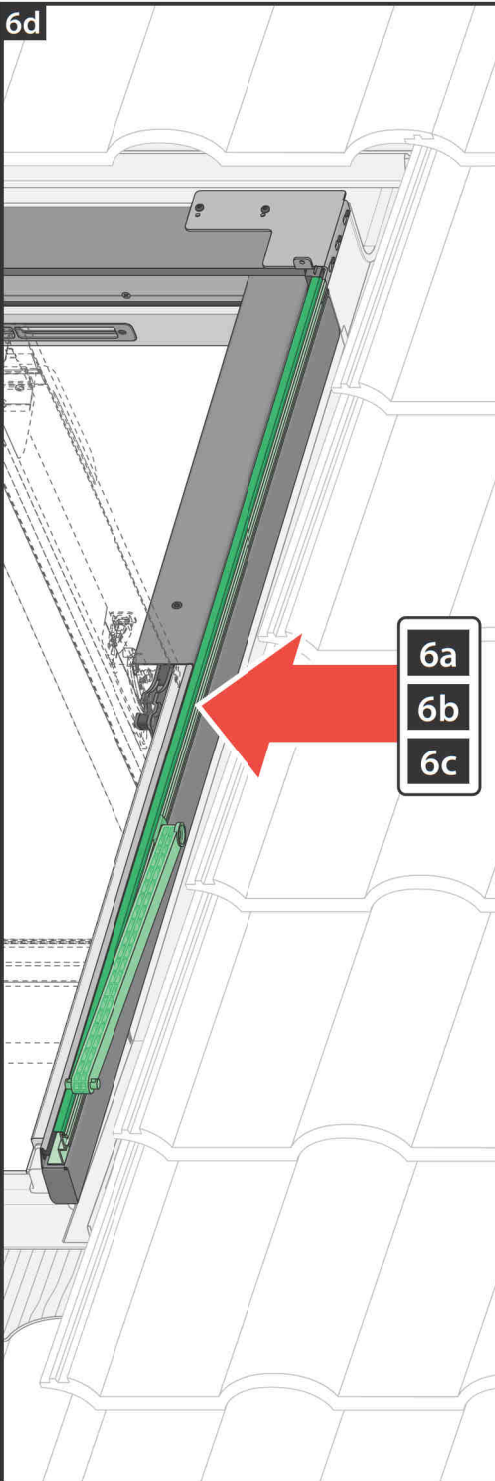


6a

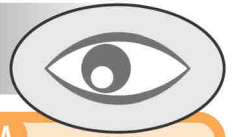








7



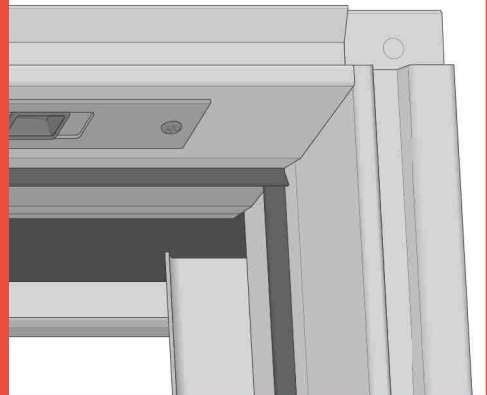
type A

type X

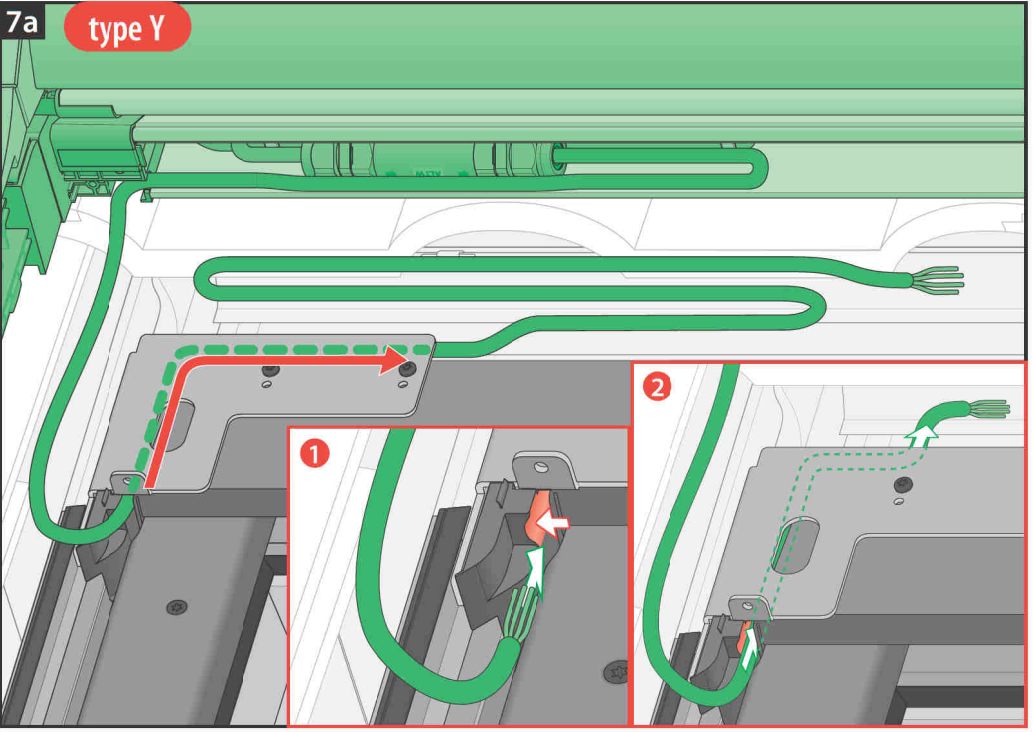
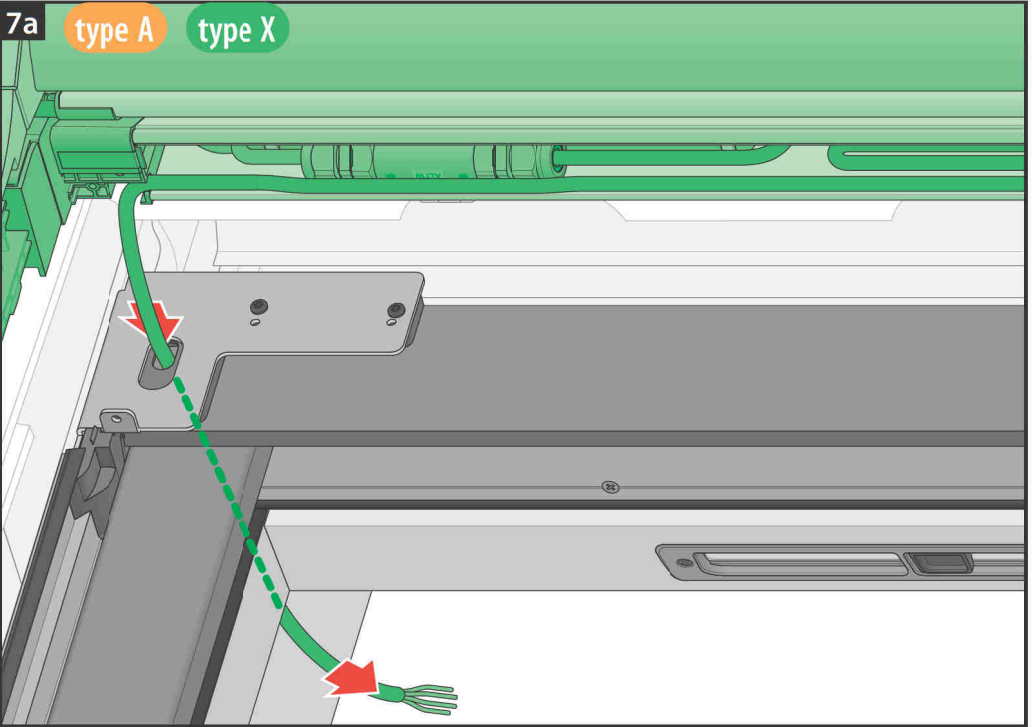


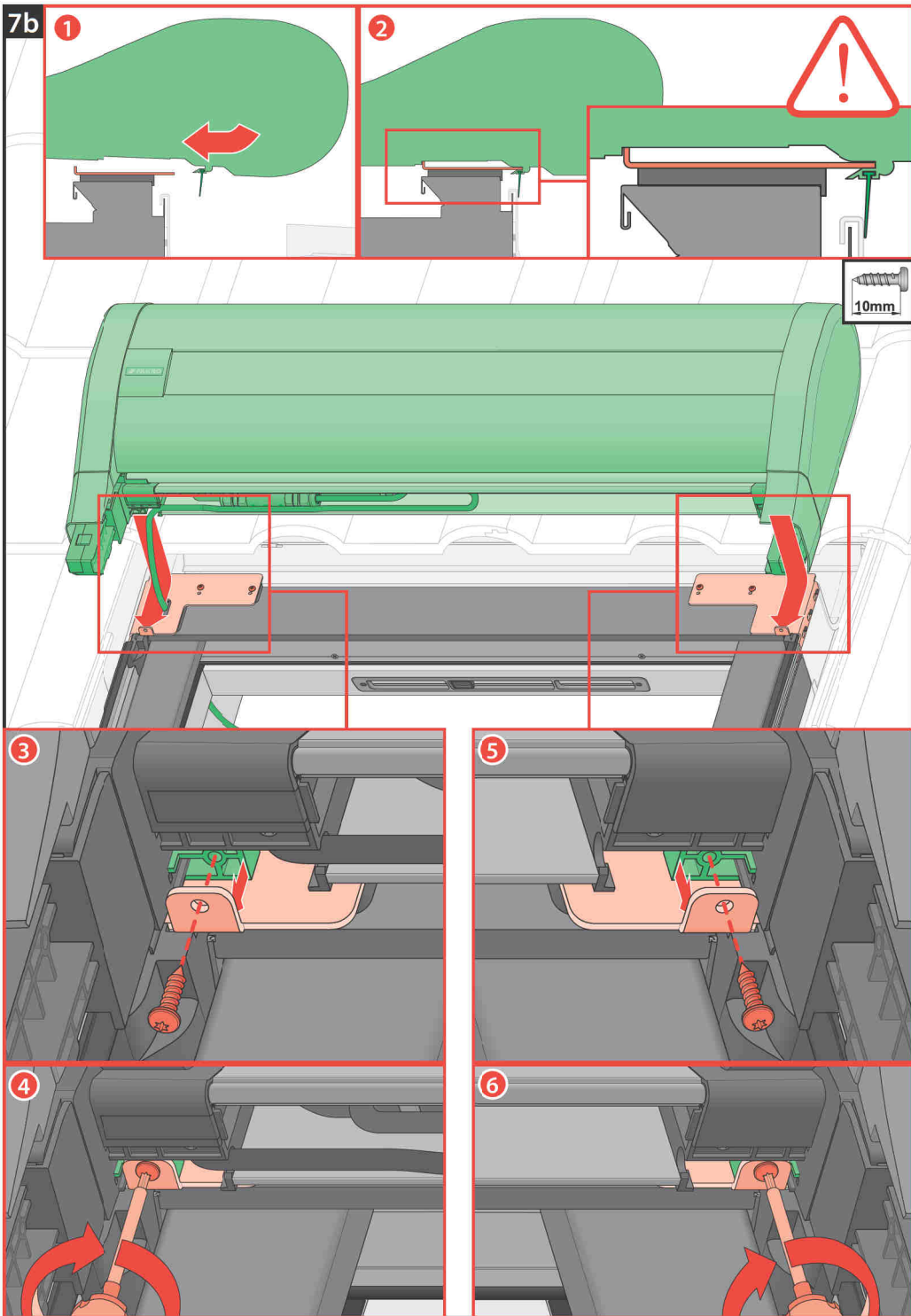
FTS, FTS-V, FTP, FTP-V, FYP, FYP-V  
FTT, FDY-V, FPP preSelect 2  
PTP, PTP-V, PYP, PYP-V

type Y

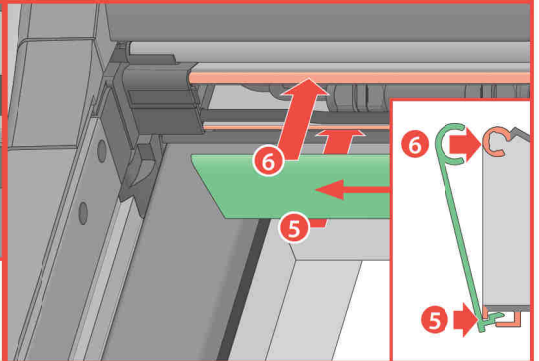
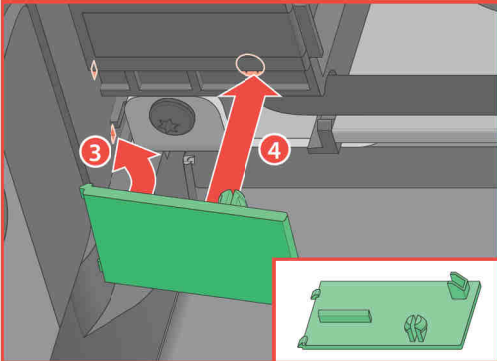
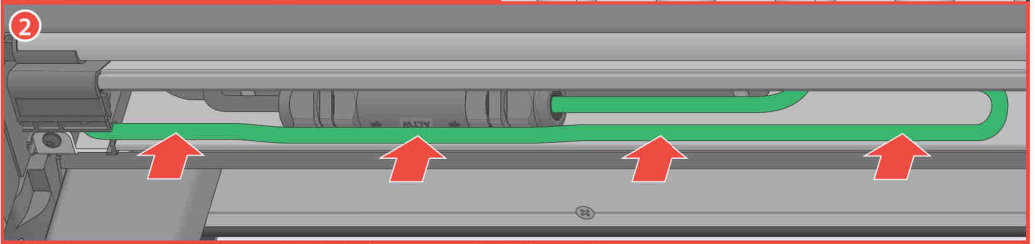
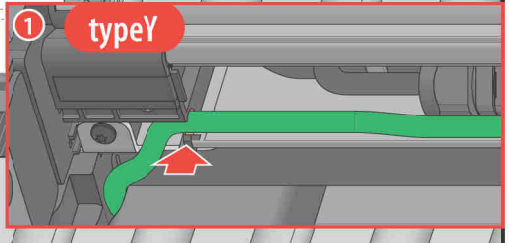
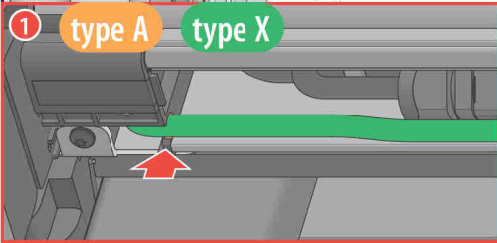
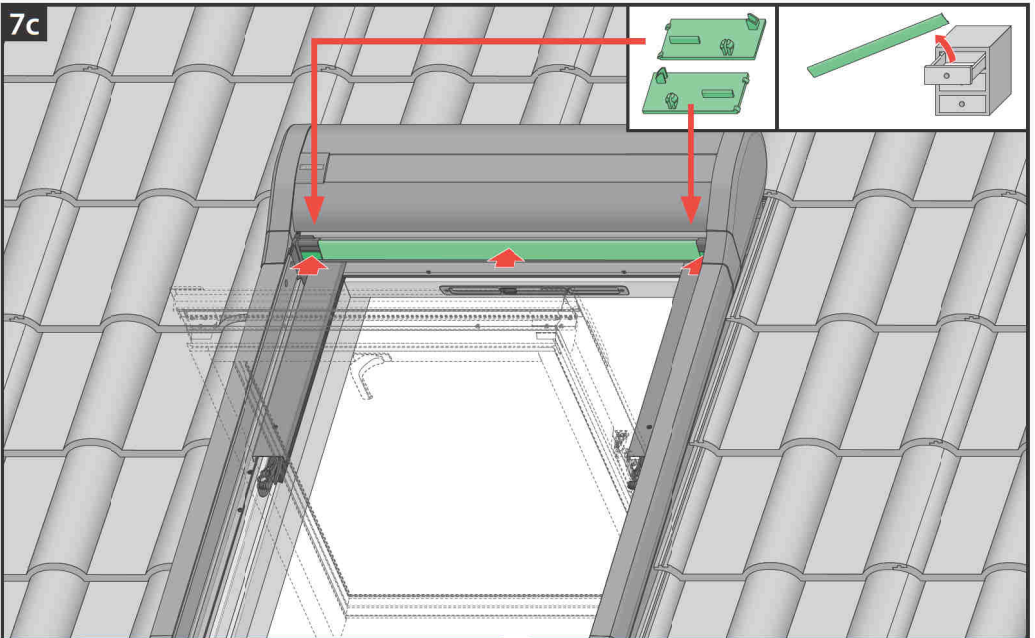


FTS, FTS-V, FTP, FTP-V, FYP, FYP-V  
FTT, FDY-V, FPP preSelect  
PTP, PTP-V, PYP, PYP-V

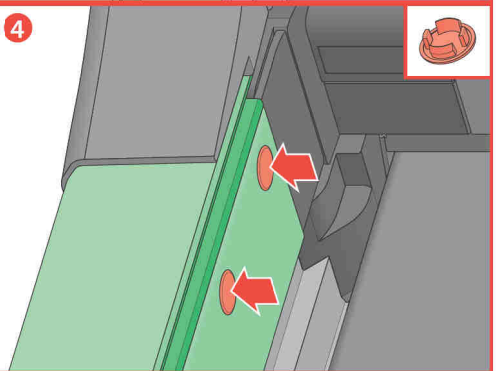
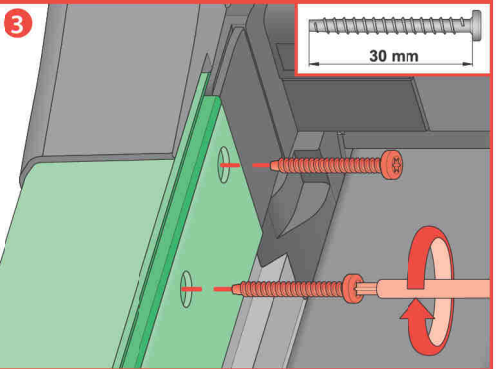
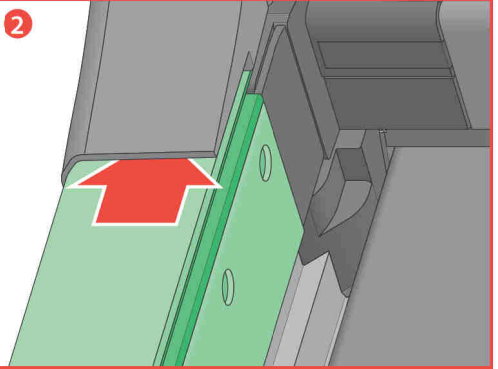
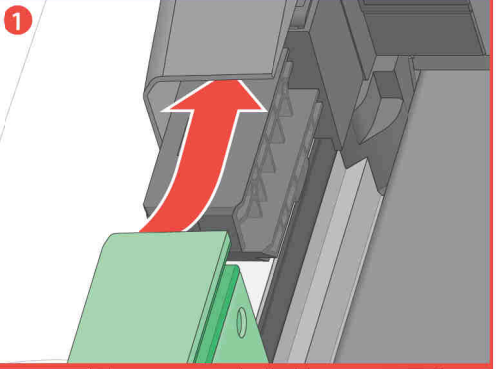


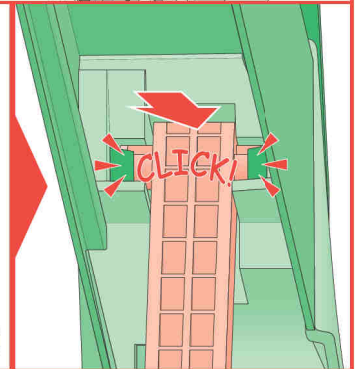
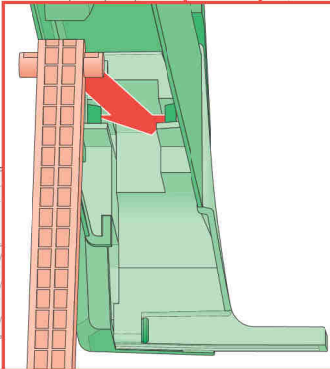
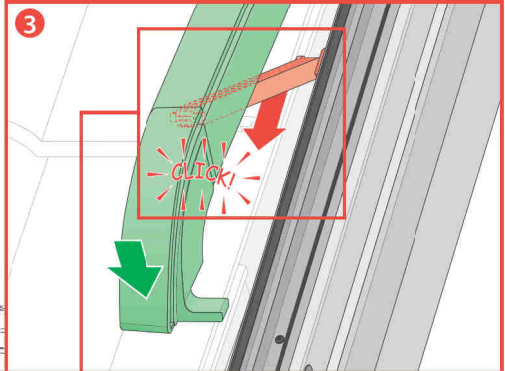
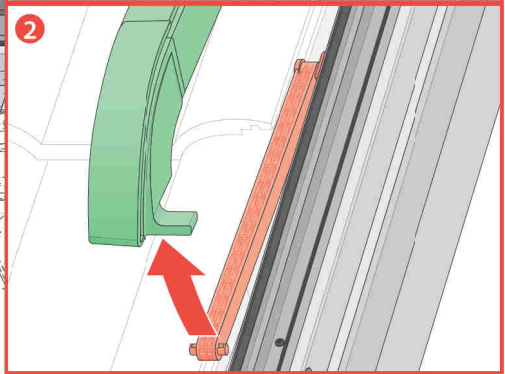
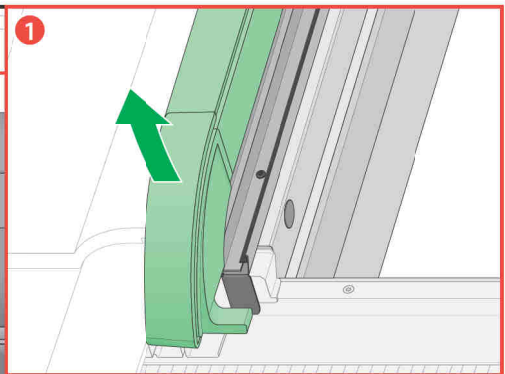
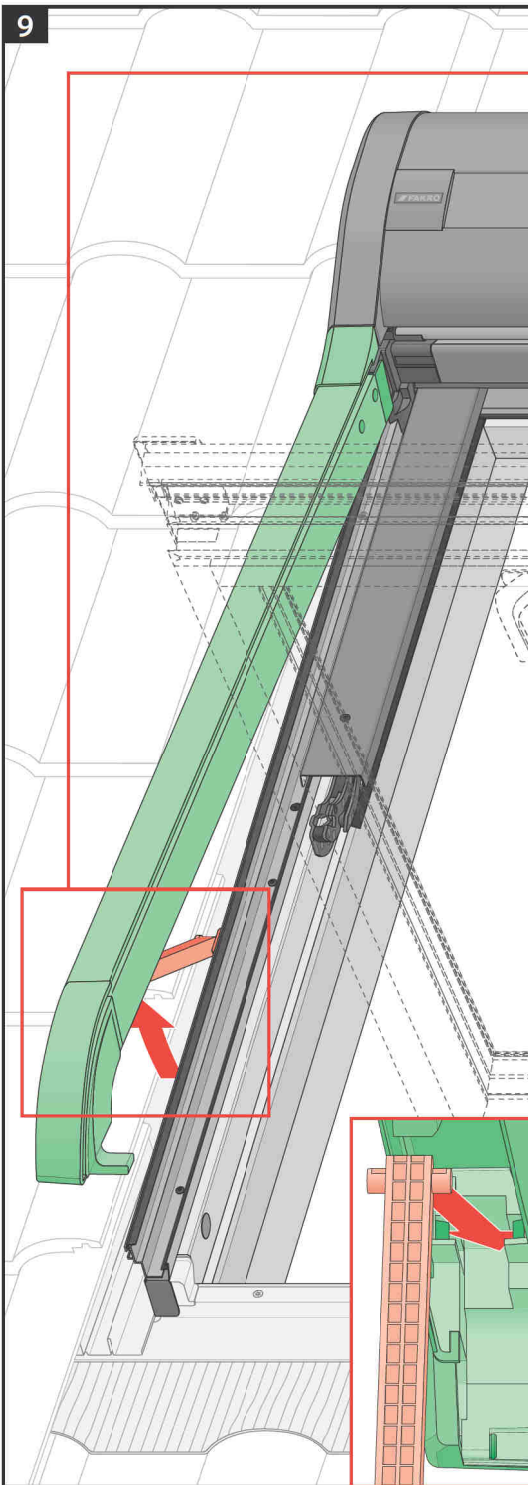


7c

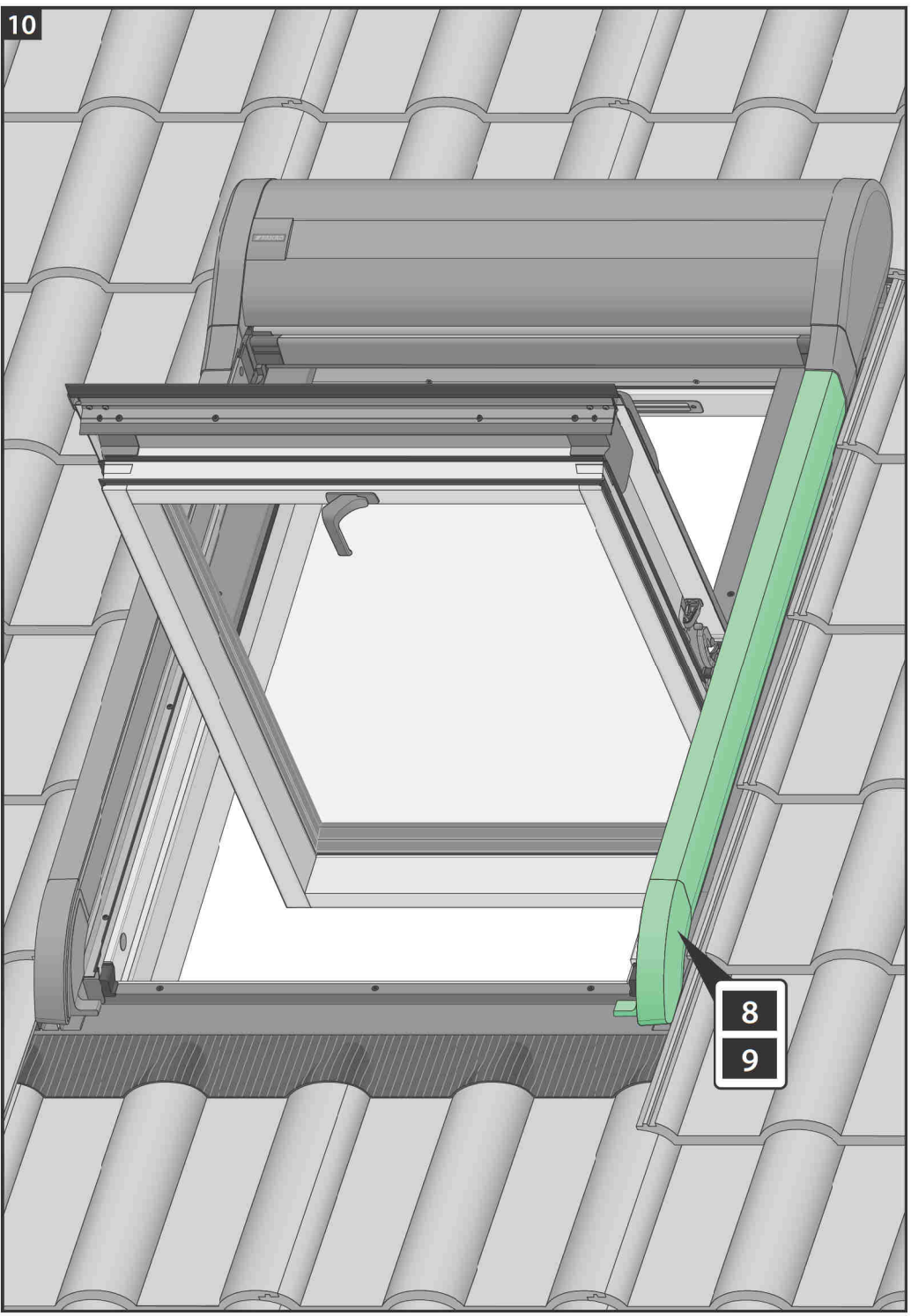


8

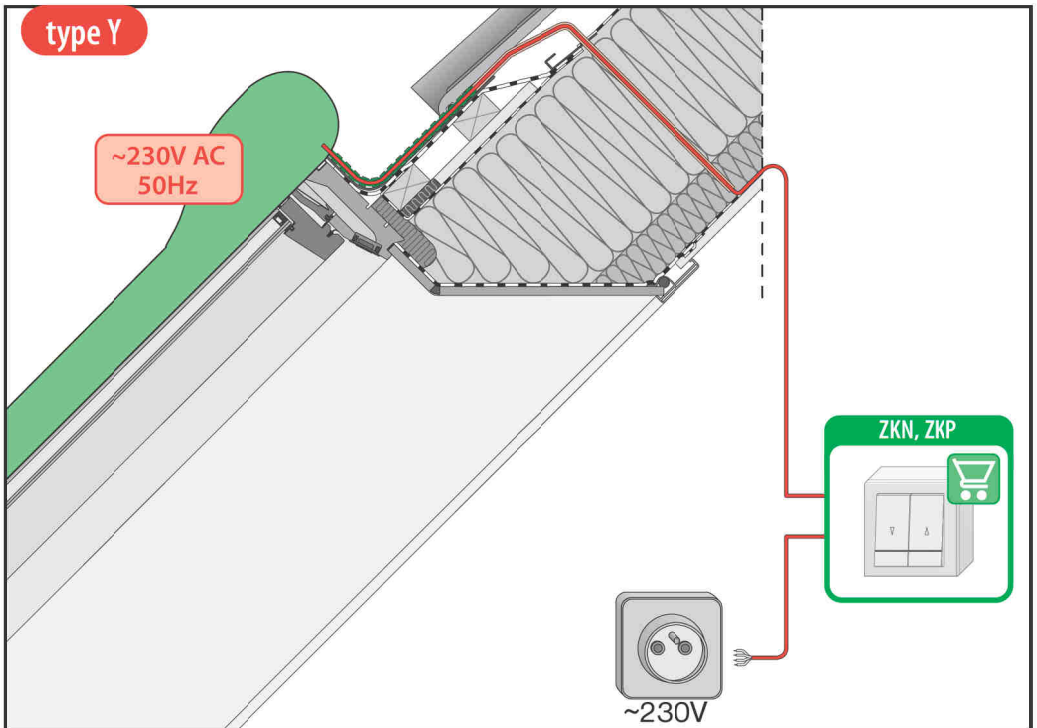
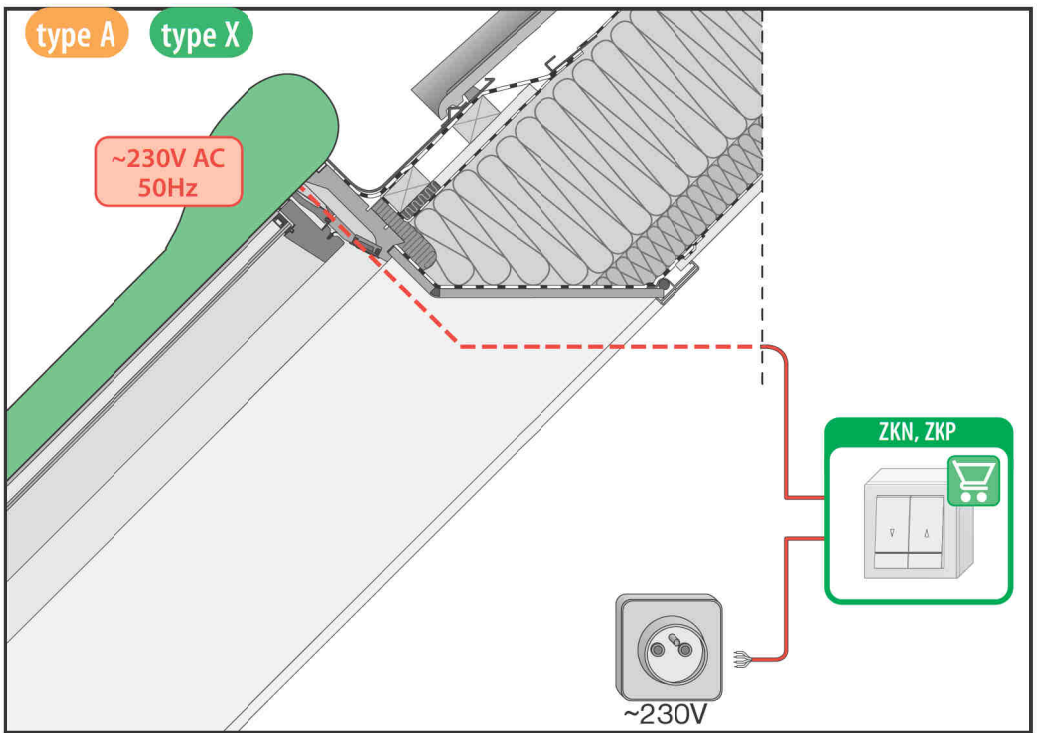




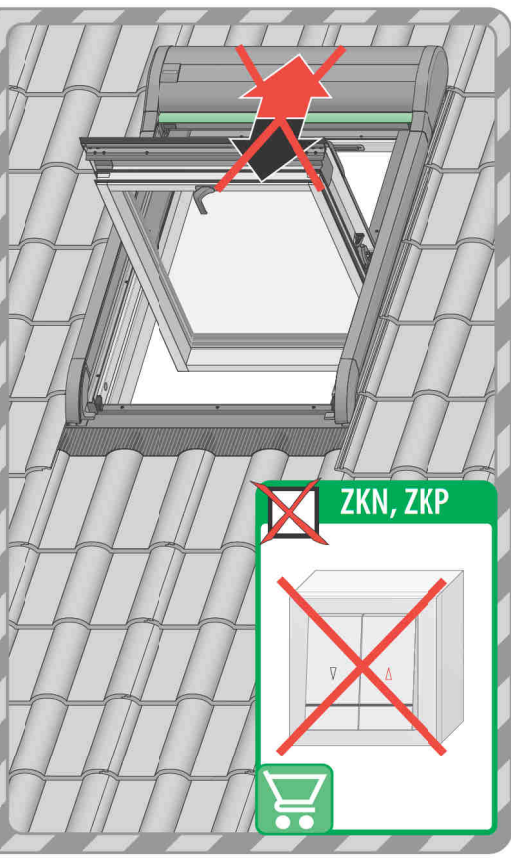
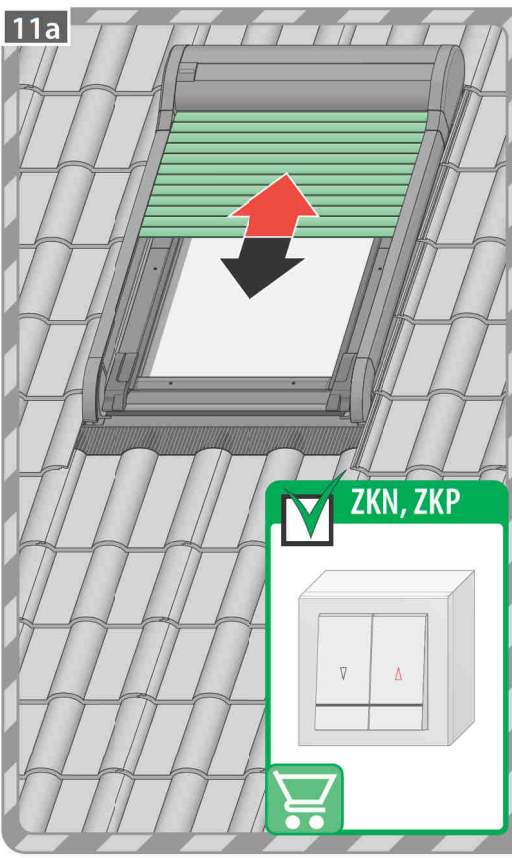
10



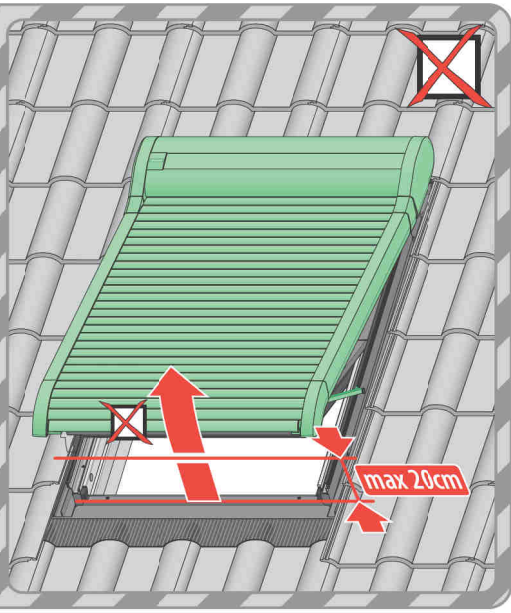
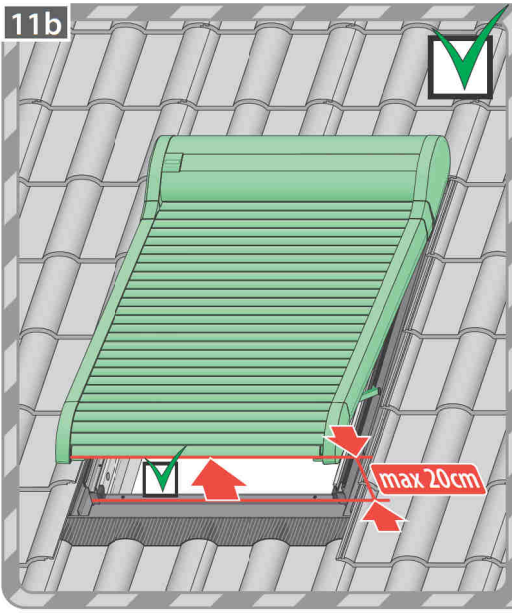
8  
9

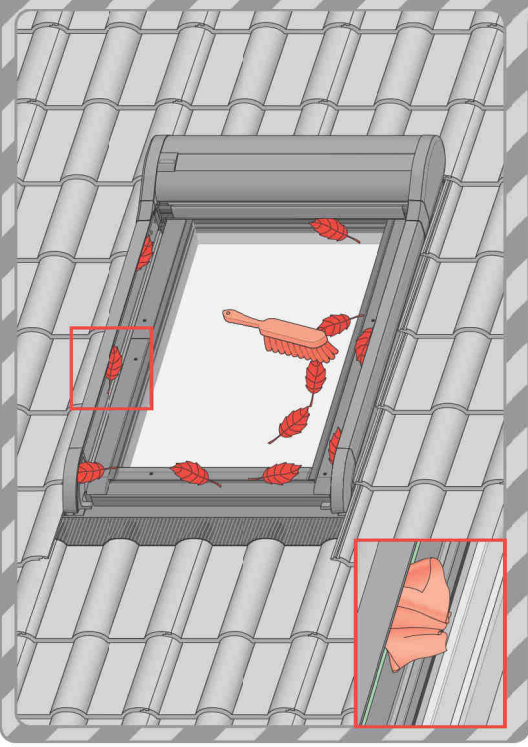
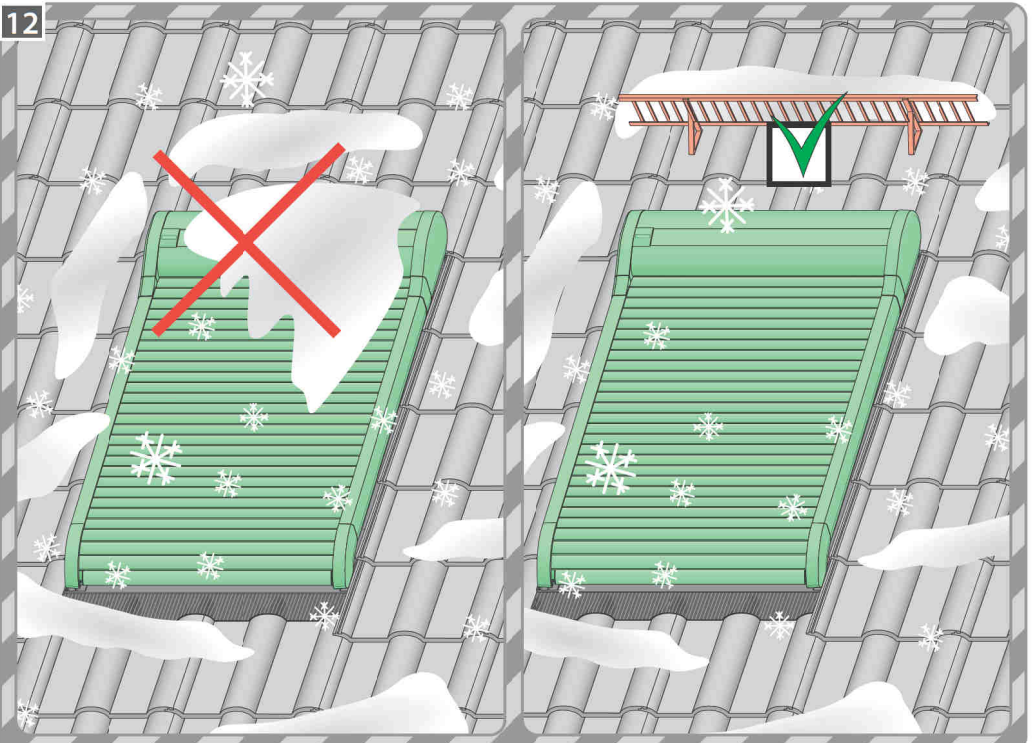


11a

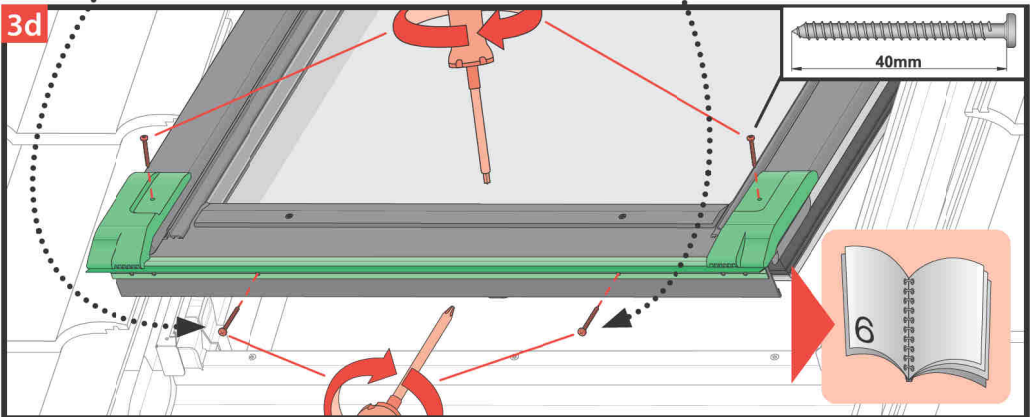
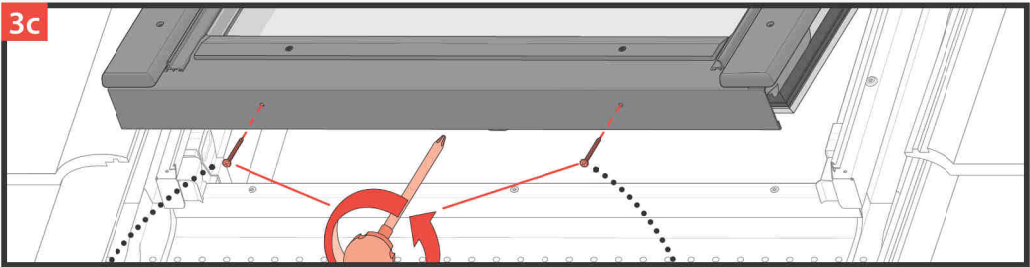
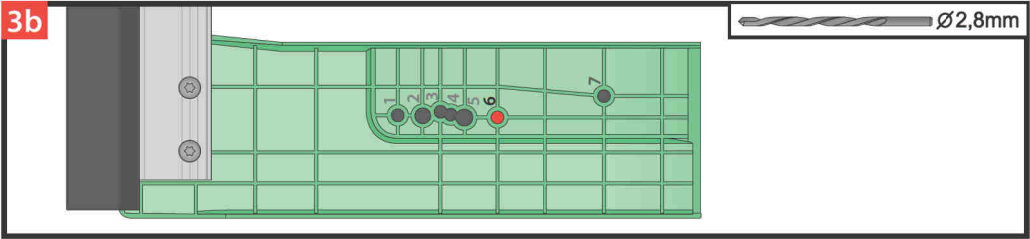
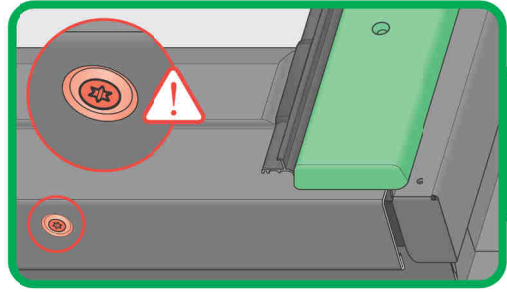
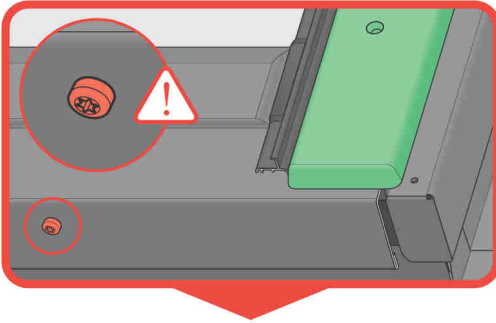
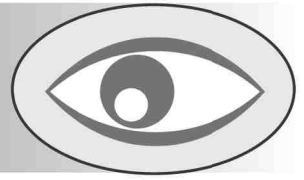


11b



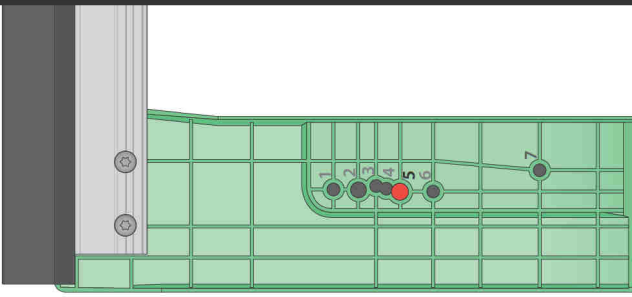


FTT

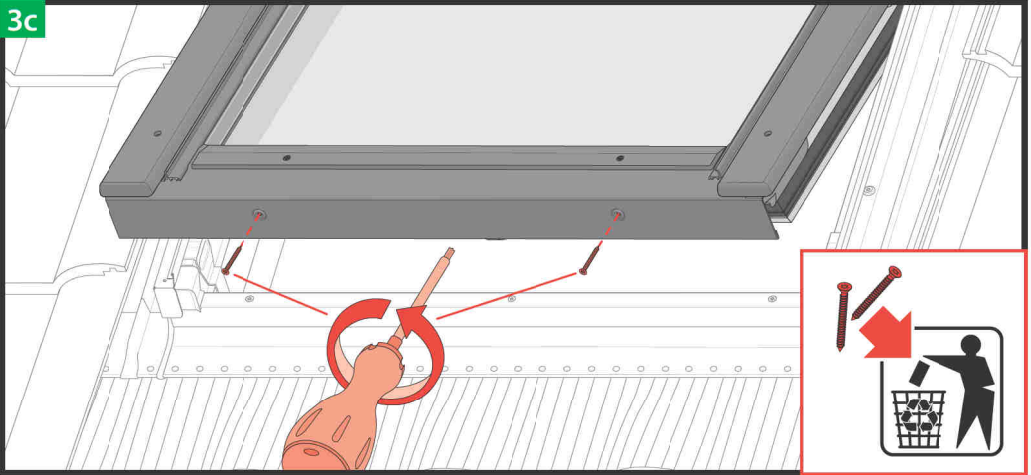


3b

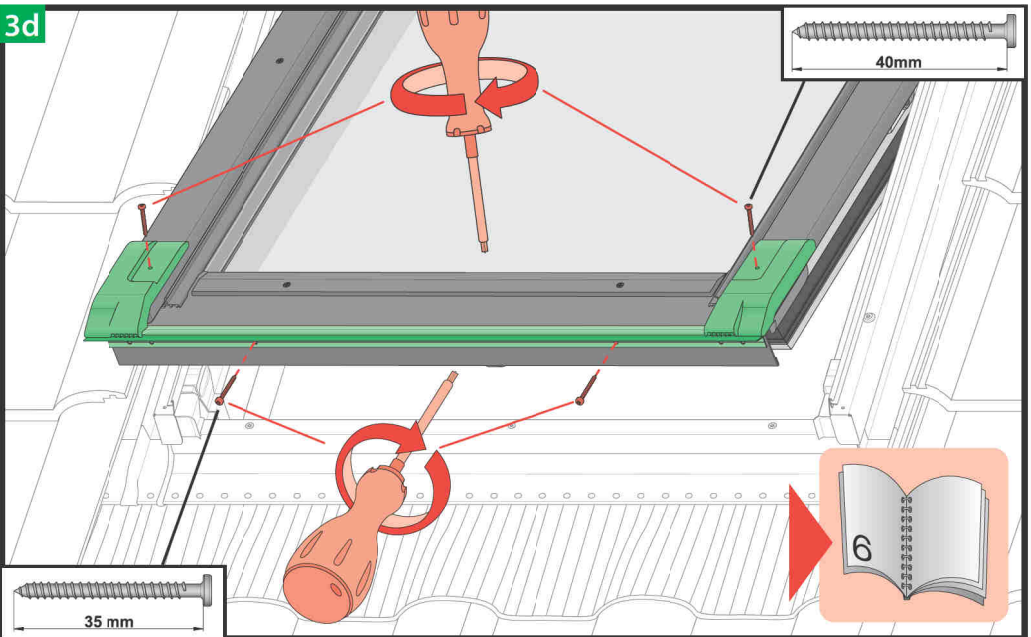
Ø2,8mm



3c



3d

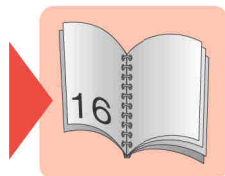
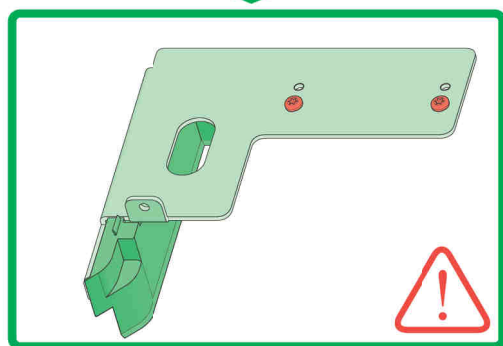
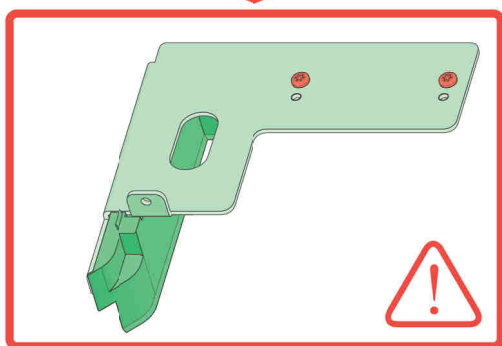
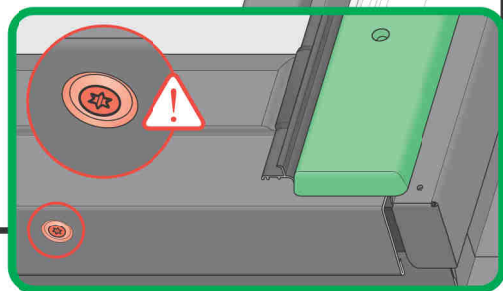
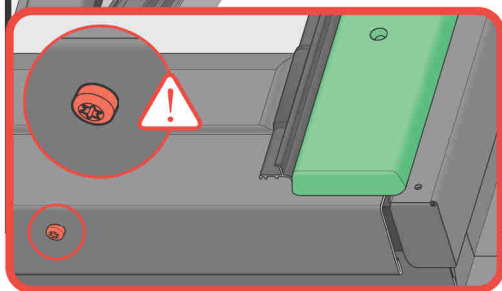
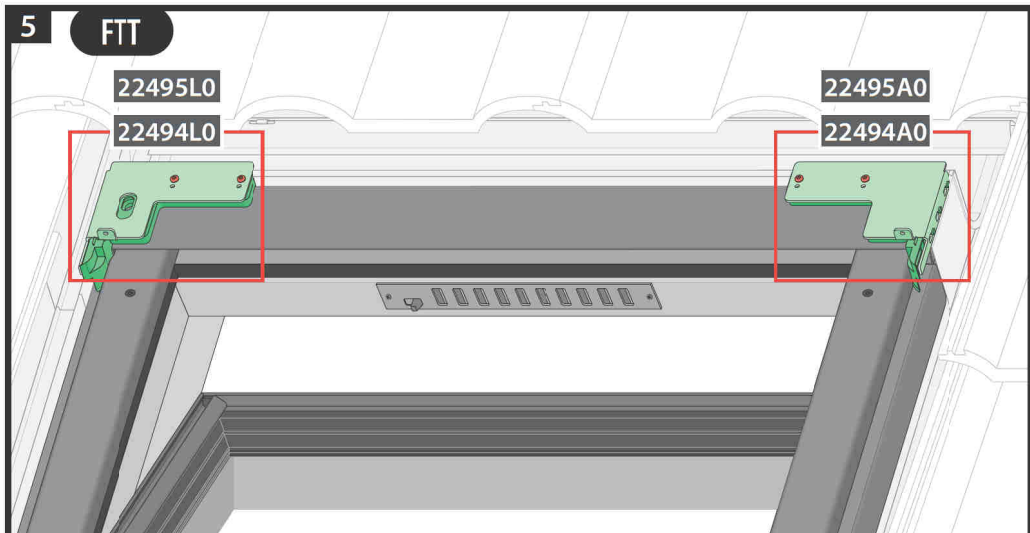


22495L0

22494L0

22495A0

22494A0









EN	Before installation, it is compulsory to read the NC91J „ORIGINAL INSTRUCTIONS 2/3 Installation and user manual”.
1	Remove the cover strip from the battery compartment.
2	Open the window.
3a	Remove screws positioned in the bottom part of the window sash.
3b	Make a hole in the bottom holder of the shutter in the place depending on the window type.
3c	Install the assembly unit holder.
3d	Screw the profile to the window sash having previously drilled the holes.
4, 4a, 4b, 4c	Use mounting washers to make holes in the window hood.
5	Install the mounting plate unit by selecting elements depending on the cladding type.
6a, 6b, 6c, 6d	Install assembly profiles of the shutter.
7a	Route the power cable. The routing method depends on the window type.
7b	Slide the shutter onto holders and fix it.
7c	Install the cover strip. Ensure correct routing of the power cable.
8	Slide the side guide rail into the shutter casing and fix it with two screws.
9	Connect the opening restrictor with the shutter guide rail.
10	Repeat steps 8-9 for the left guide rail.
11	Operate the shutter using the switch. Do not run the shutter with the window open.
12	Do not allow accumulation of snow on the shutter. For this purpose it is recommended to use devices preventing snow from sliding onto the shutter. Regularly remove any dirt that might obstruct operation of the shutter.

PL	Przed montażem należy zapoznać się z treścią instrukcji NC91J „INSTRUKCJA ORYGINALNA 2/3 Zasady montażu i użytkowania”.
1	Zdemontować listwę maskującą z komory baterii.
2	Otworzyć okno.
3a	Wykręcić wkręty znajdujące się w dolnej części skrzydła okna.
3b	Wykonać otwór w uchwycie dolnym rolety w miejscu uzależnionym od typu okna.
3c	Zamontować zespół uchwytu montażowego.
3d	Przykręcić profil do skrzydła okna wcześniej nawiercając otwory.
4, 4a, 4b, 4c	Użyć podkładek montażowych w celu wykonania otworów w kapturze okna.
5	Zamontować zespół blachy montażowej dobierając elementy w zależności od typu obłachowania.
6a, 6b, 6c, 6d	Zamontować profile montażowe rolety.
7a	Przeprowadzić przewód zasilający. Sposób prowadzenia w zależności od typu okna.
7b	Nasunąć roletę na uchwyty, przykręcić.
7c	Zamontować listwę maskującą. Zapewnić odpowiednie ułożenie przewodu zasilającego.
8	Wsunąć prowadnicę boczną w korpus rolety i przykręcić za pomocą dwóch wkrętów.
9	Połączyć ogranicznik otwarcia z prowadnicą rolety.
10	Powtórzyć czynności 8-9 dla prowadnicy lewej.
11	Sterować roletą za pomocą przełącznika. Nie uruchamiać rolety przy otwartym oknie.
12	Nie dopuszczać do nagromadzenia śniegu na roletcie, w tym celu zaleca się stosowanie urządzeń zapobiegających zsuwaniu się śniegu na roletę. Regularnie usuwać zanieczyszczenia, które mogłyby utrudniać pracę rolety.



BG	Производител и Продавец не носят отговорност за неспазване на съответните закони, строителни норми и киевския закон за безопасност на потребителя на продукта, архитекта, монтажника или собственика на сградата.
CZ	Výrobce ani prodejce nenesou žádnou odpovědnost za neudržení průběžných předpisů, stavebních předpisů a bezpečnostních požadavků uživatelem výrobku, architektem, montážním nebo vlastním budovy.
DE	Hersteller und Verkäufer übernehmen keine Haftung für Nichtbeachtung entsprechender Rechts- und Bauvorschriften sowie Sicherheitsanforderungen seitens Produktbenutzer, Architekten, Monteure oder Gebäudebesitzer.
EE	Tootaja ja müüja ei vastuta toote kasutaja, arhitekti, paigaldaja või hoone omaniku poolt kehtivate seaduste, määruste ja ohutusnõuete rikkumise eest.
ES	El fabricante y el vendedor no tienen ninguna responsabilidad por el incumplimiento de la ley vigente, normas de construcción y exigencias de seguridad por parte del usuario del producto, arquitecto, instalador o el propietario del edificio.
FR	Le fabricant et le vendeur ne prend aucune responsabilité de ne pas respecter les lois applicables, les règlements sur les bâtiments et les exigences de sécurité par l'utilisateur du produit, l'architecte, l'installateur ou le propriétaire du bâtiment.
GB	Manufacturer and Seller shall bear no liability for failures, compliance with the applicable laws, building codes and safety requirements by the user of the product, architect, fitter or owner of the building.
HU	A gyártó és a forgalmazó nem vállal semmiféle felelősséget a vonatkozó törvényi, építési és biztonsági előírások, építészeti, beépítésmester vagy épülettulajdonos által be nem tartásáért.
IT	Il Produttore e il Venditore non potranno essere ritenuti responsabili per il mancato rispetto da parte dell'utente del prodotto, del progettista, dell'installatore o del proprietario dell'edificio, delle leggi vigenti, nonché dei regolamenti edilizi e di quelli relativi alla sicurezza.

LT	Gaminintojas ir pardavėjas neprisiima jokios atsakomybės už tai, kad gamintojas, architektas, montuotojas ar pastato savininkas nesilaiko galiojančių statybos, architektūros ir saugos reikalavimų.
LV	Kārtotājs un mazumtirdzniecības uzņēmums atbildot par likumu, noteikumu un drošības prasību neieviešanu, no produkta lietotāja, arhitekta, uzstādītāja vai ēkas īpašnieka puses.
NL	De fabrikant en verkoper zijn niet aansprakelijk voor gevolgen bij het niet opvolgen van toepasselijke wetten, bouwbesluiten en veiligheidsvoorschriften door de gebruiker van het product, de architect, de installateur of de eigenaar van het gebouw.
PL	Producent i Sprzedawca nie ponosi żadnej odpowiedzialności za nieprzestrzeganie stosownych przepisów prawa, przepisów budowlanych i wymogów bezpieczeństwa przez użytkownika produktu, architekta, montażystę lub właściciela budynku.
PT	O fabricante e o vendedor não tem nenhuma responsabilidade pelo o não cumprimento da lei, códigos de construção e as exigências de segurança por parte do usuário do produto, arquiteto, instalador ou proprietário do edifício.
RO	Nici producătorul, nici distribuitorul nu își vor asuma niciun fel de răspundere pentru neapăsarearea legilor în vigoare, a legilor din domeniul construcțiilor sau a măsurilor de siguranță impuse utilizării produsului, arhitectului, montajistului sau proprietarilor clădirii.
SI	Proizvajalec in prodajalec nista prevzemata odgovornosti za neupoševanje ustreznih pravnih in gradbenih predpisov ter varnostnih zahtev s strani uporabnika izdelka, projektanta, montažista ali lastnika objekta.
SK	Výrobca a predávateľ nenesú žiadnu zodpovednosť za neudržanie príslušných ustanovení zákona, stavebných predpisov a bezpečnostných požiadaviek užívateľom výrobku, architektom, montážnym alebo majiteľom objektu.