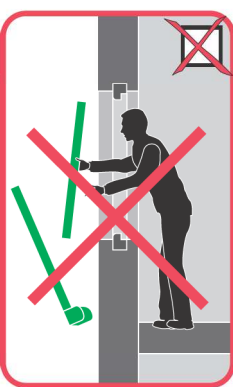
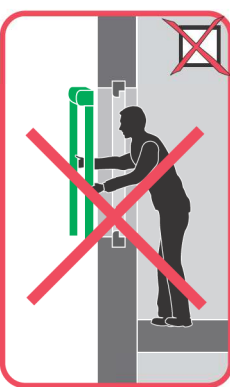
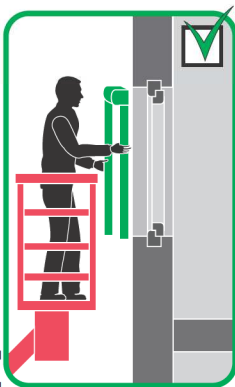
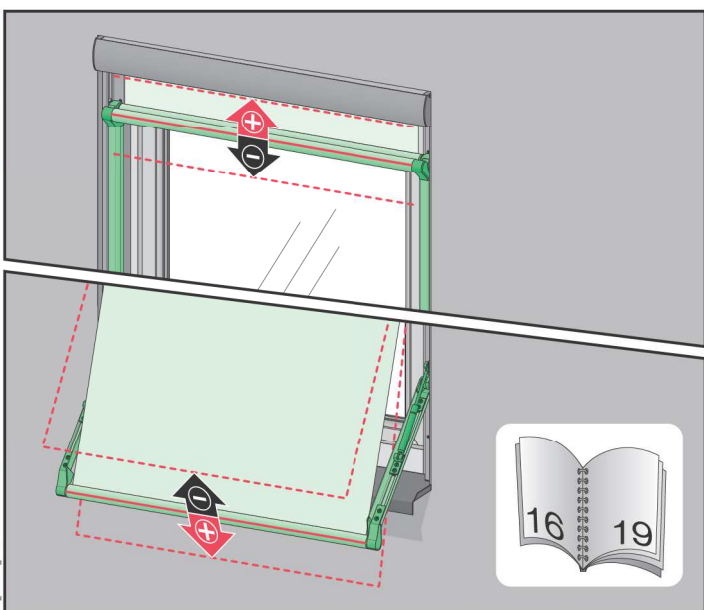
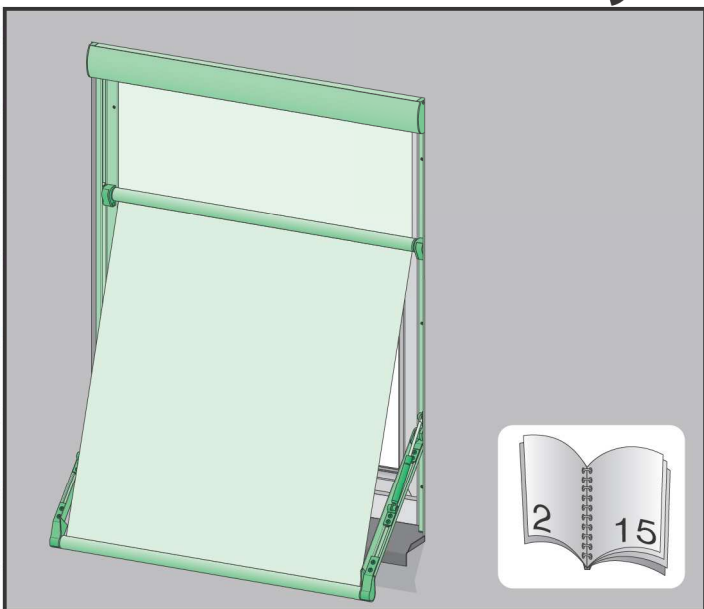




VMB WiFi Tuya



NC 9W7_VMB WiFi Tuya_25.08.27_UNI_KB4207

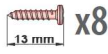
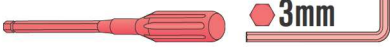


Fakro Smart





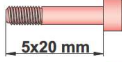
PZ2



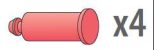
x8



x2



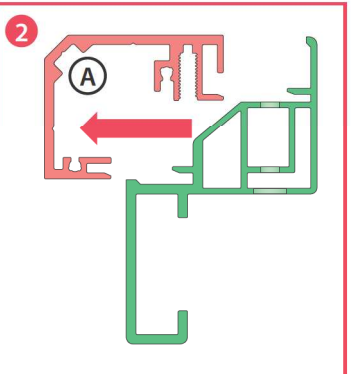
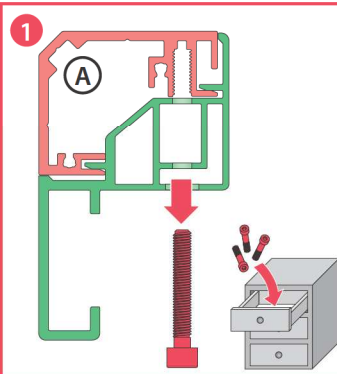
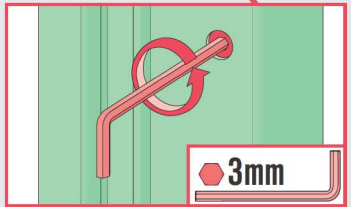
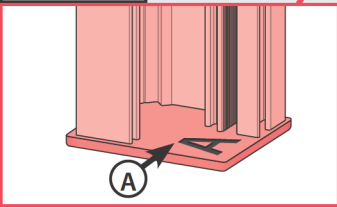
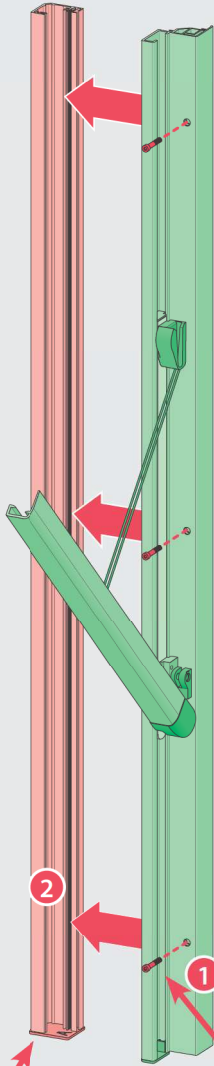
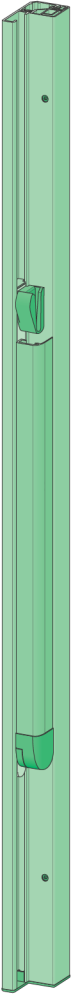
x2

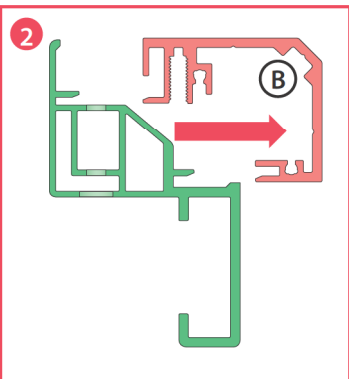
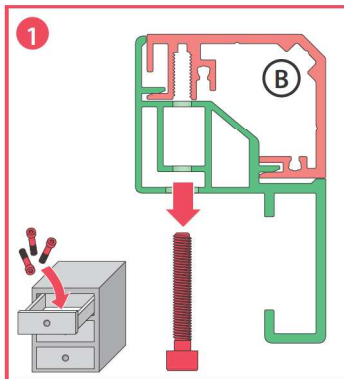
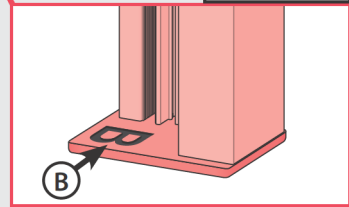
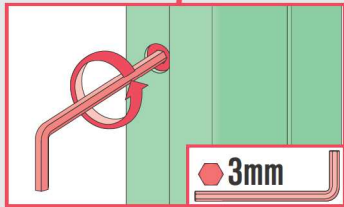
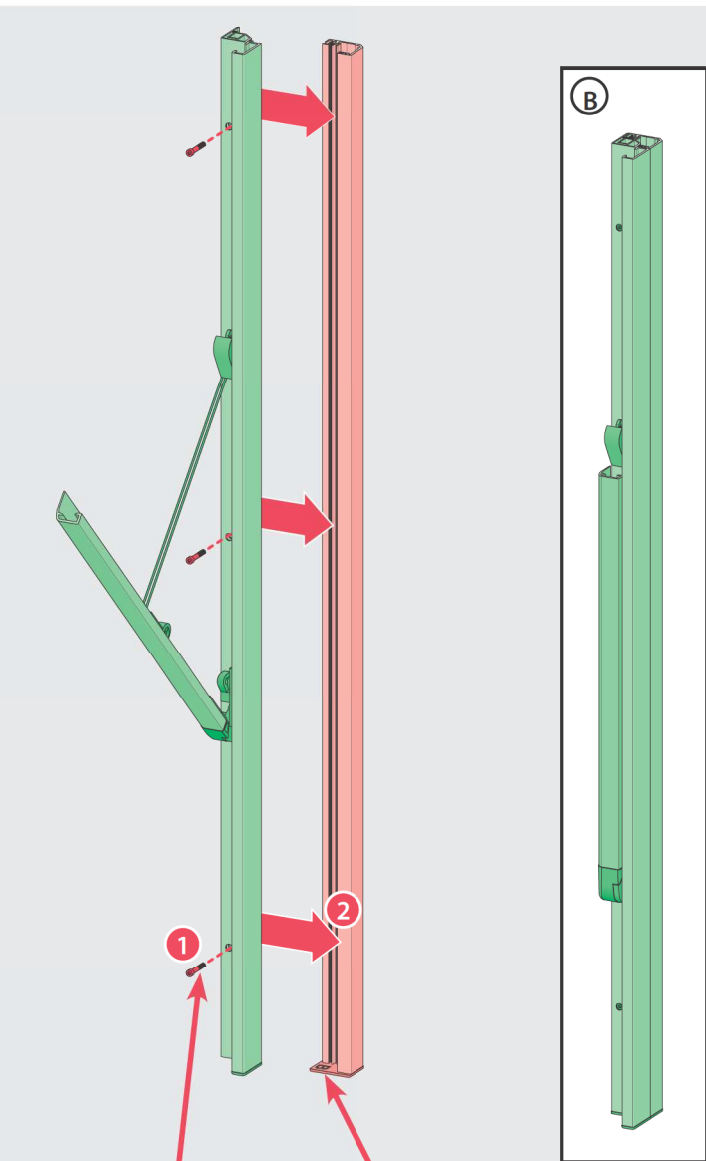
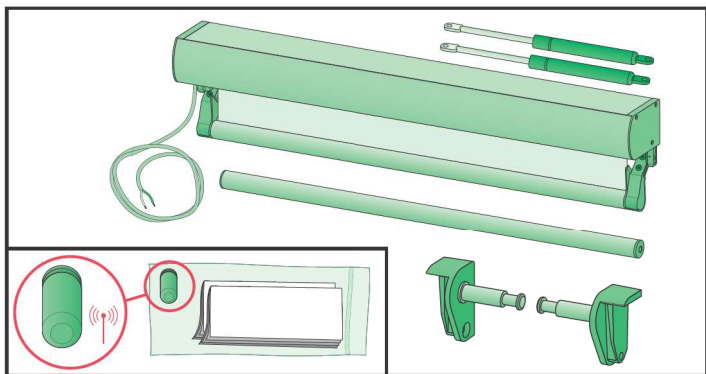


x4

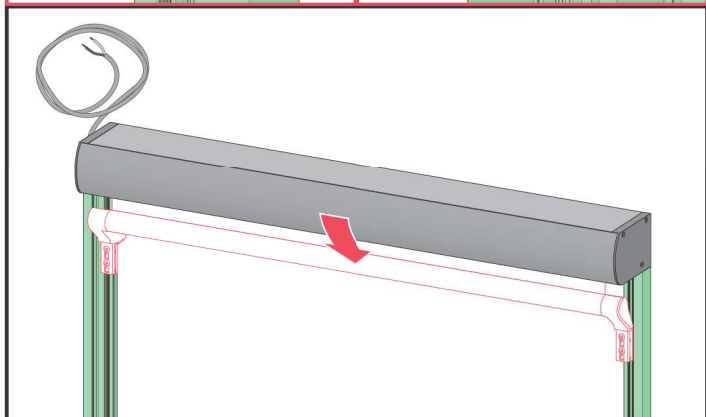
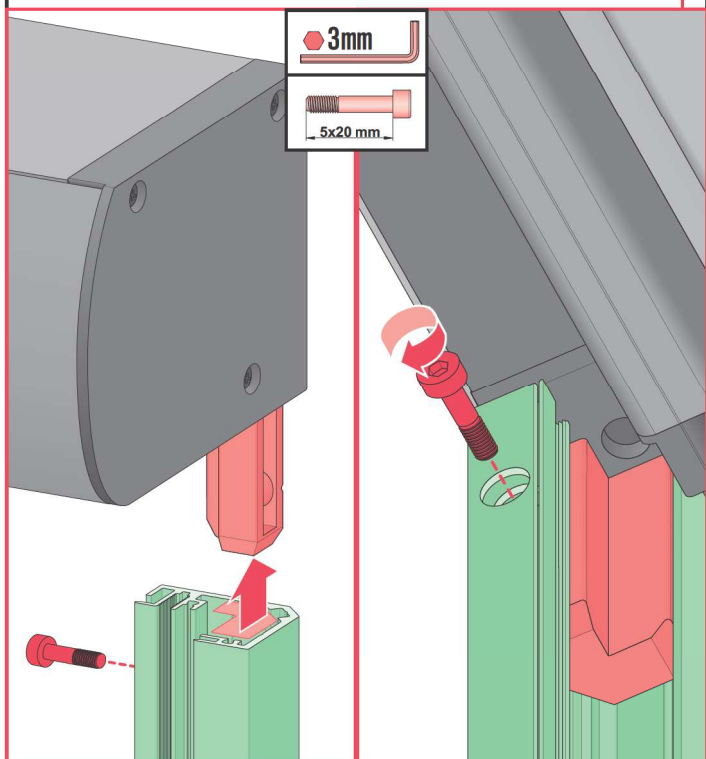
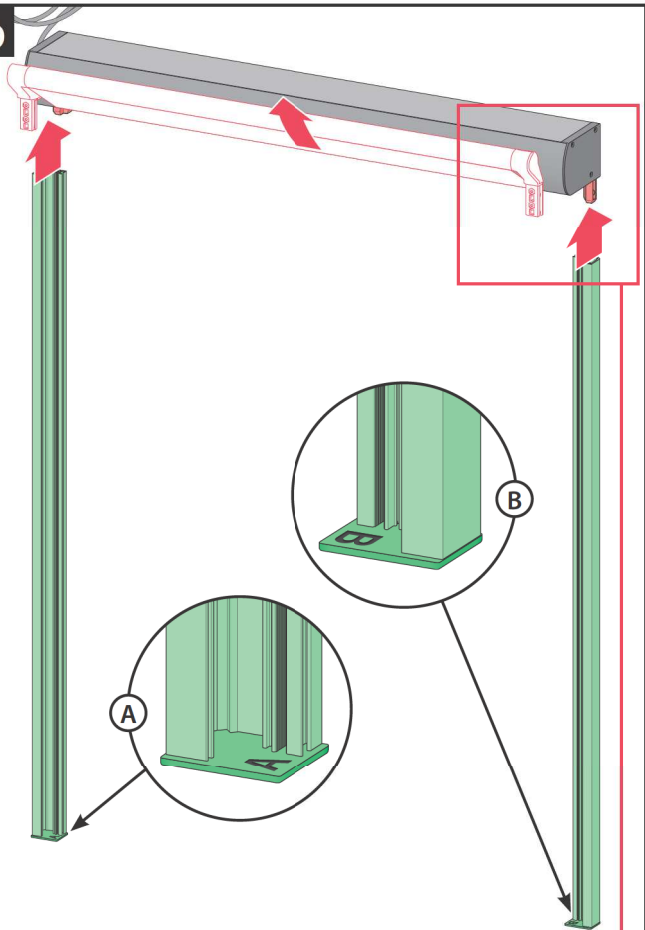
1a

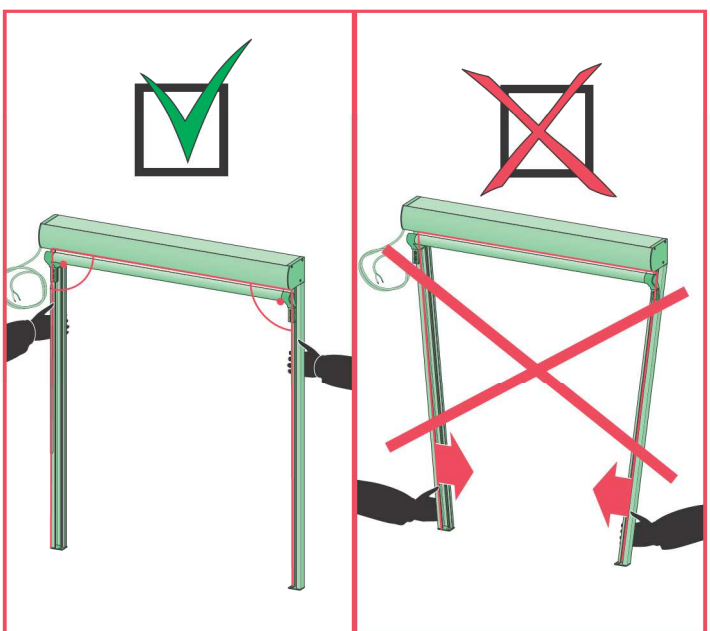
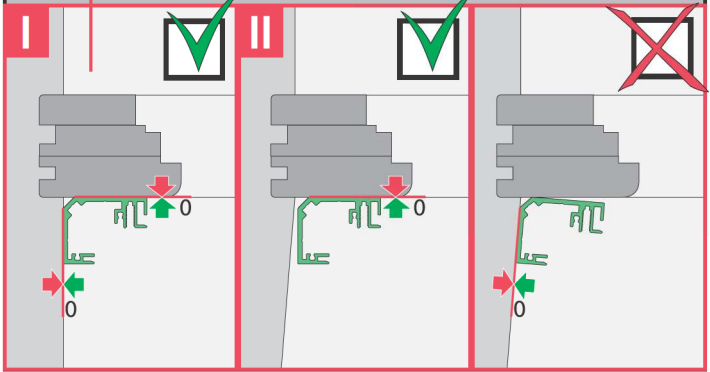
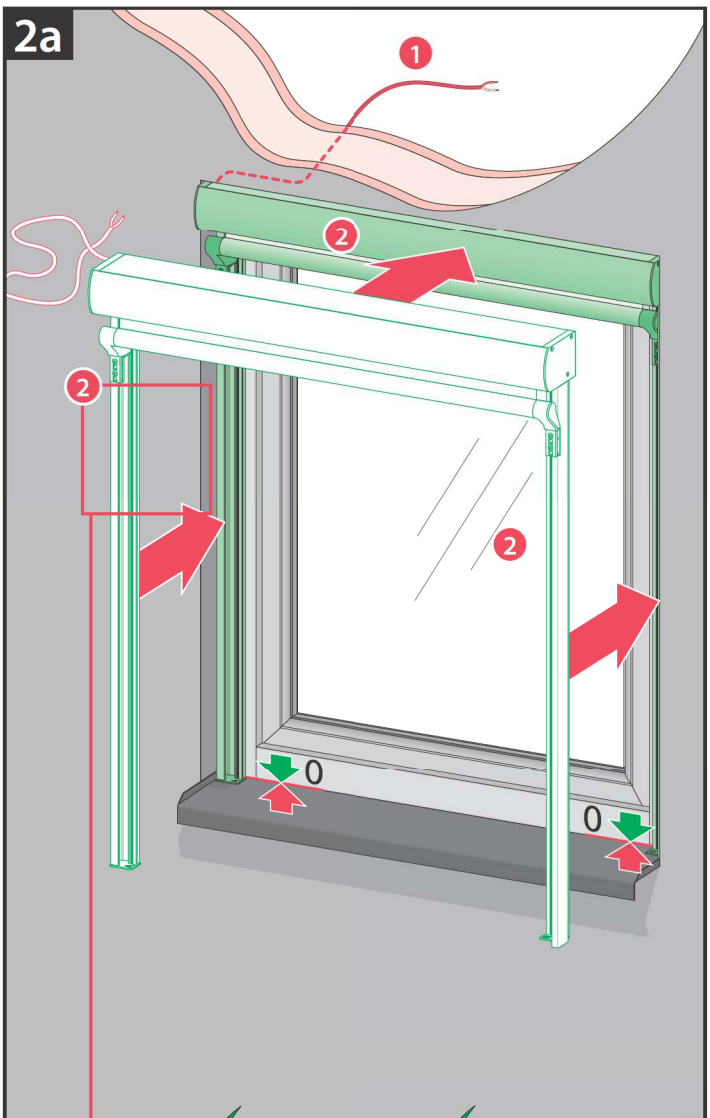
(A)



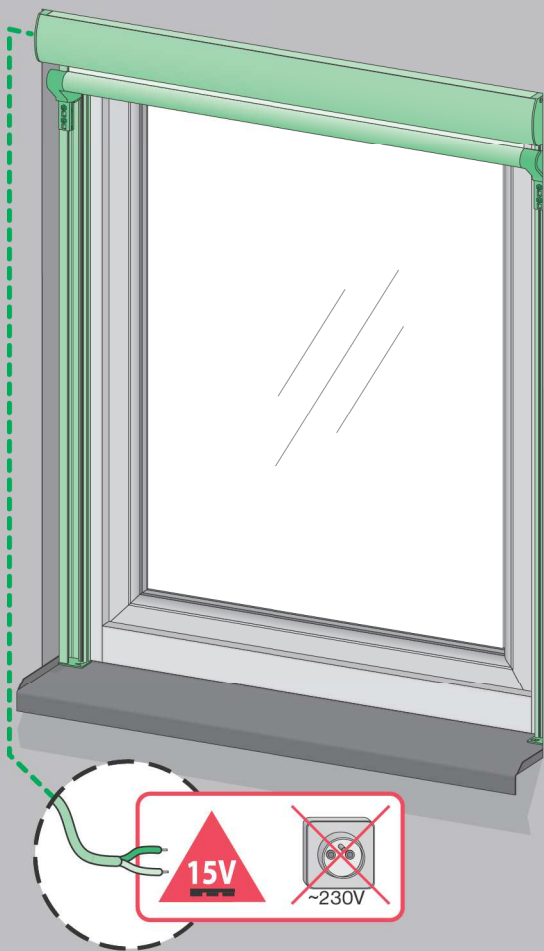


1b

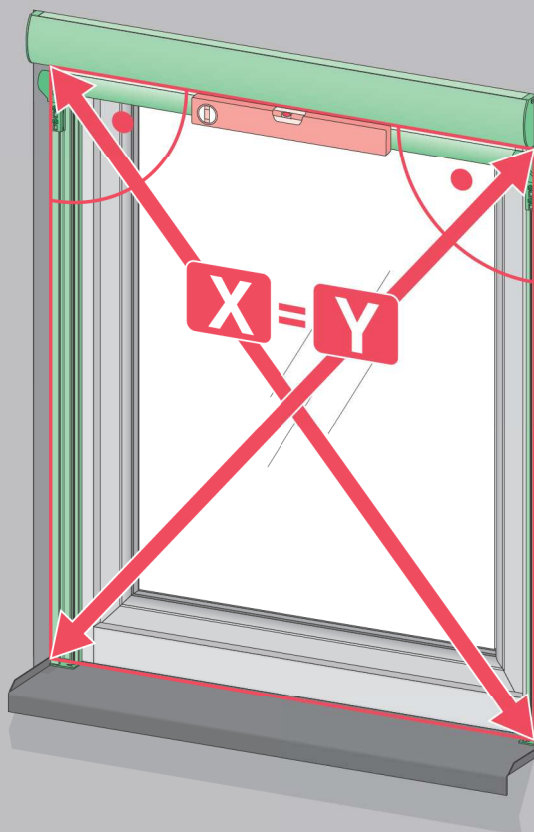




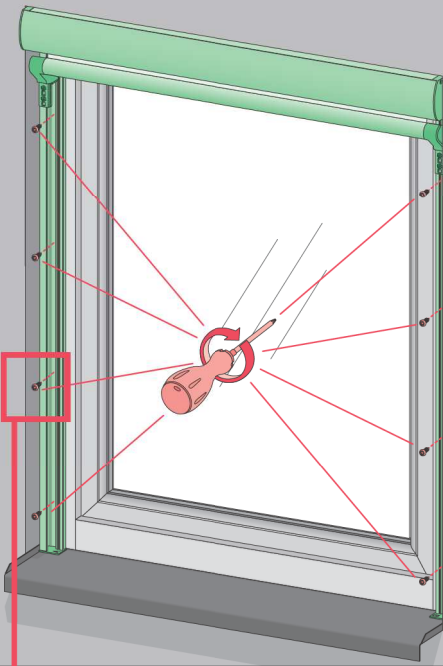
2b



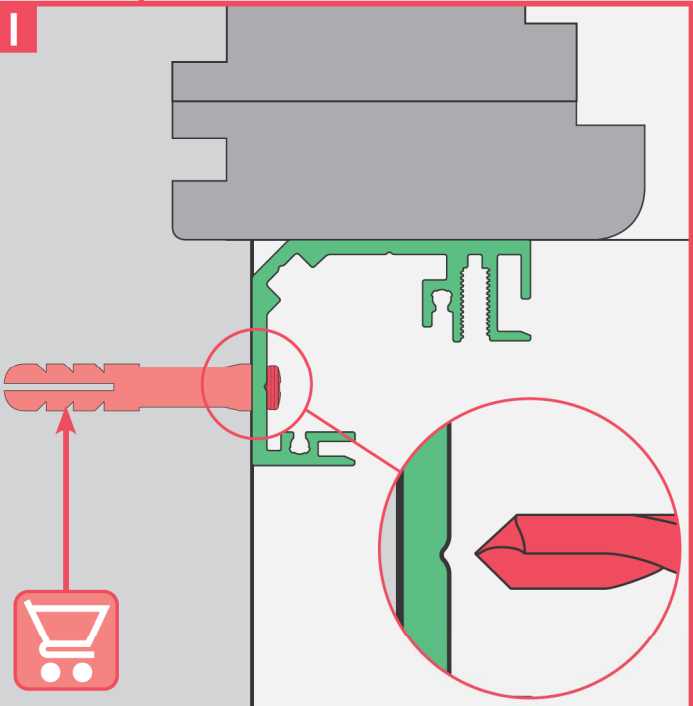
2c



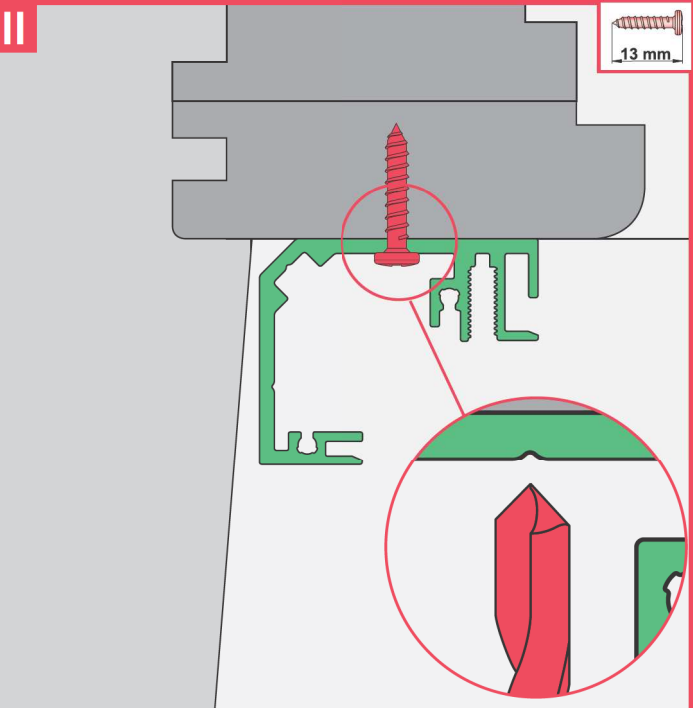
3



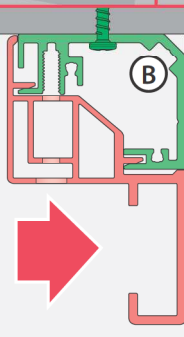
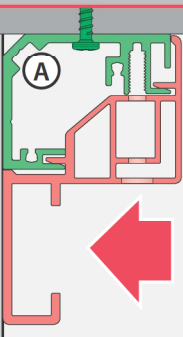
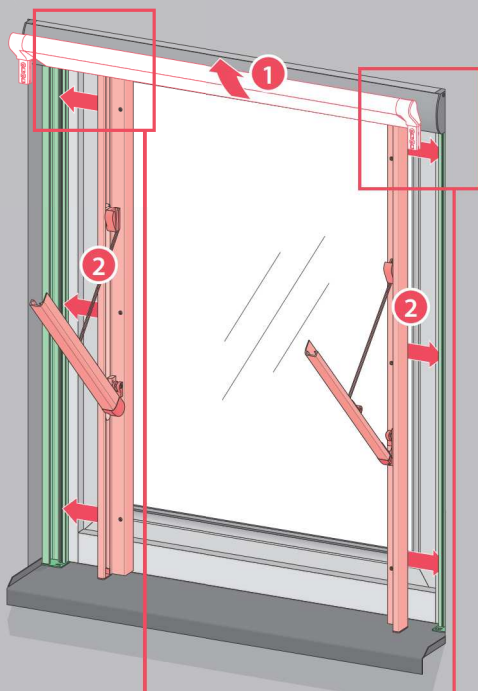
I



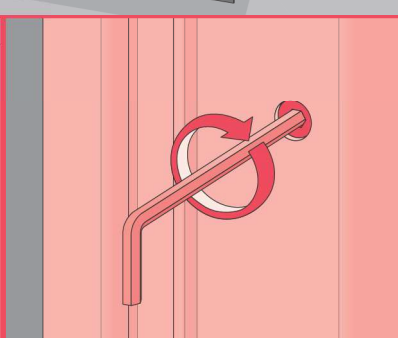
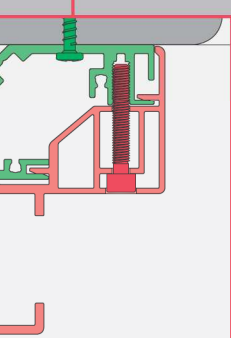
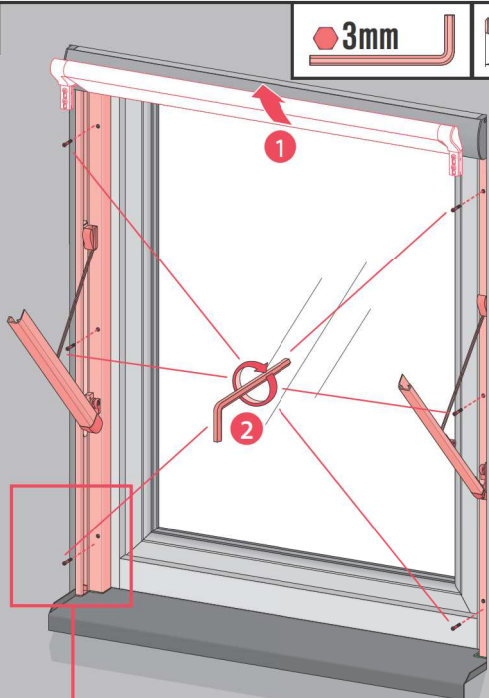
III



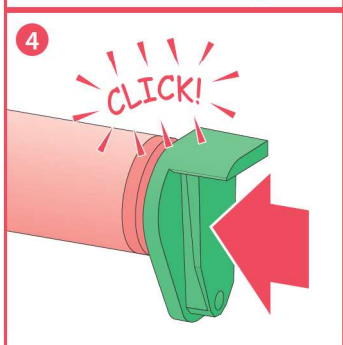
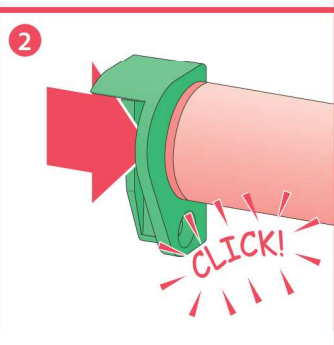
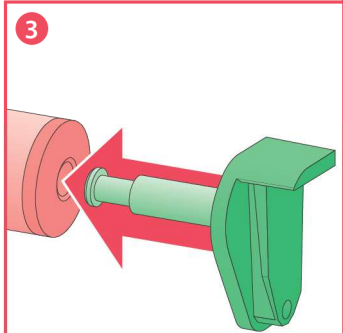
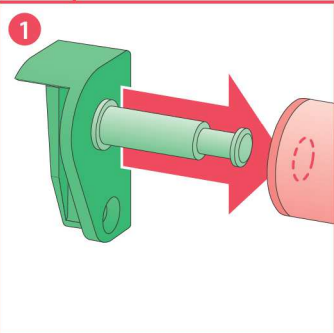
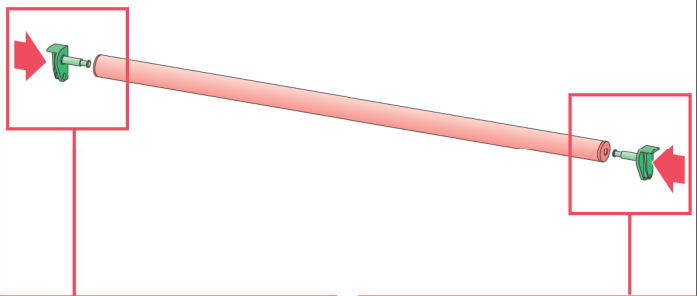
4a



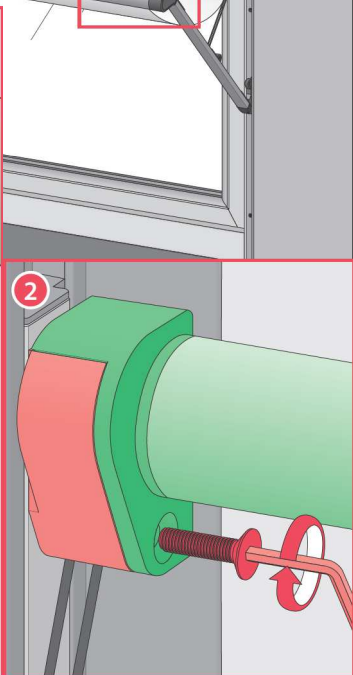
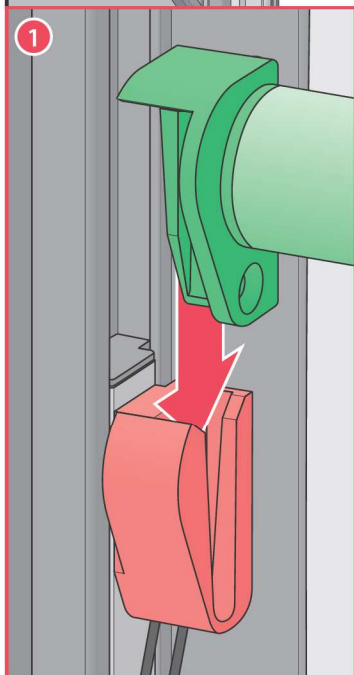
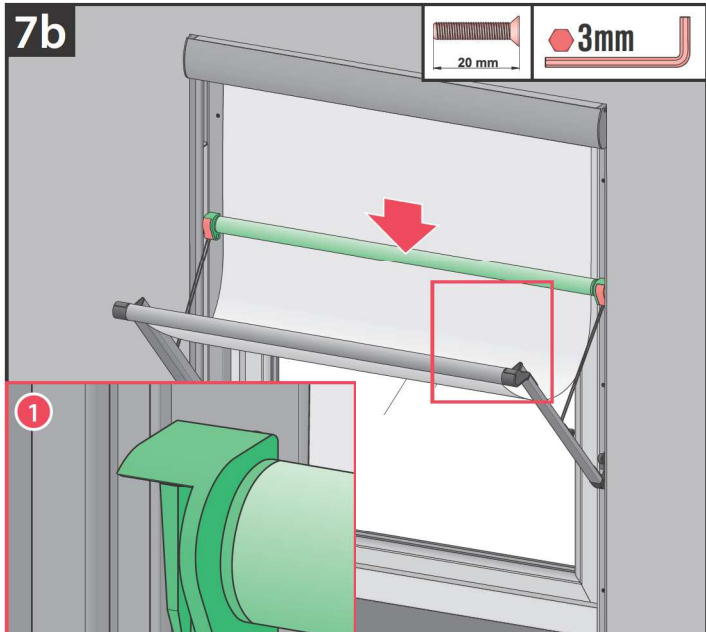
4b



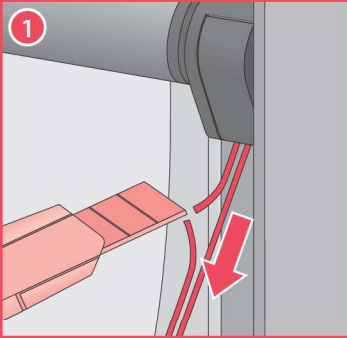
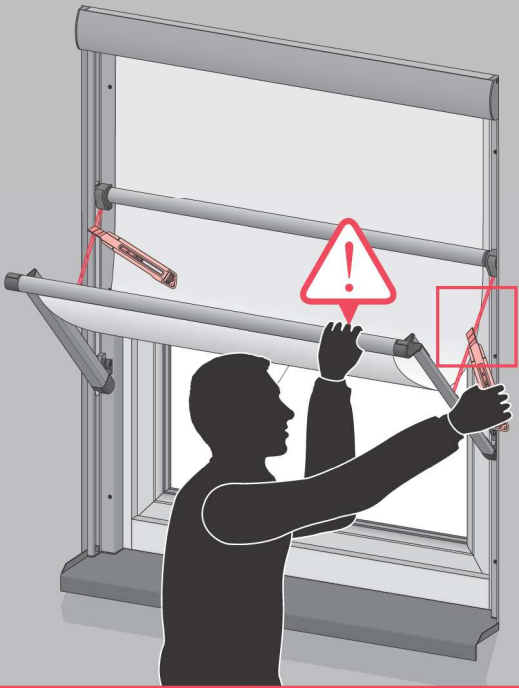
7a



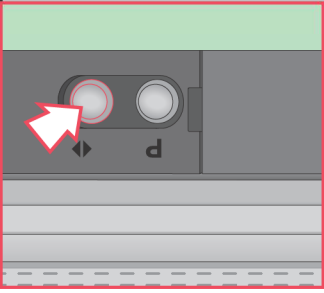
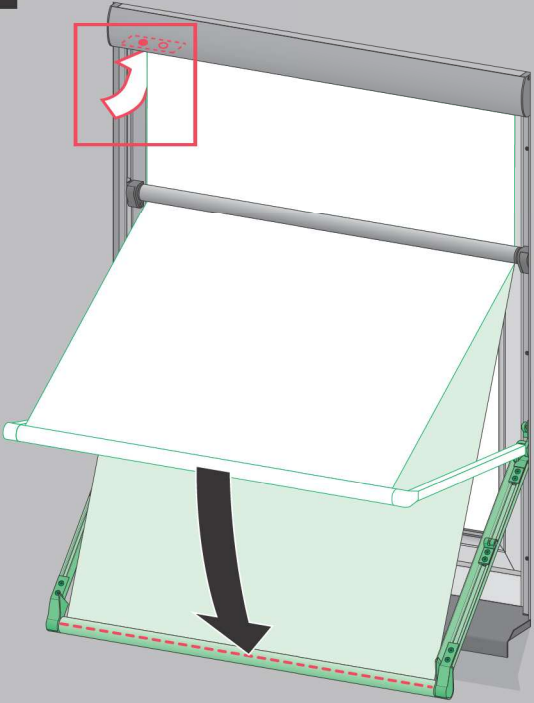
7b



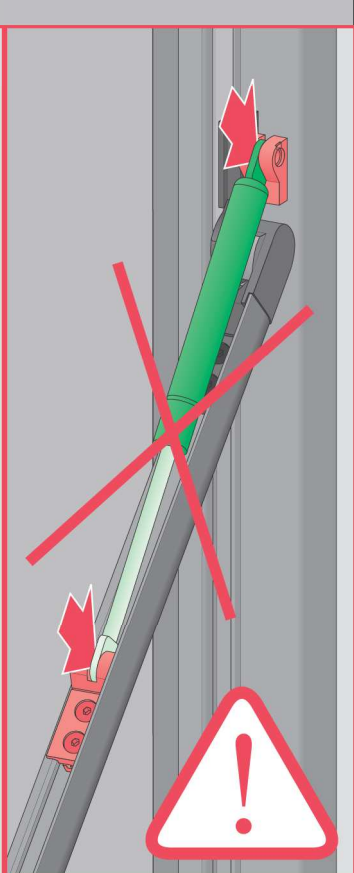
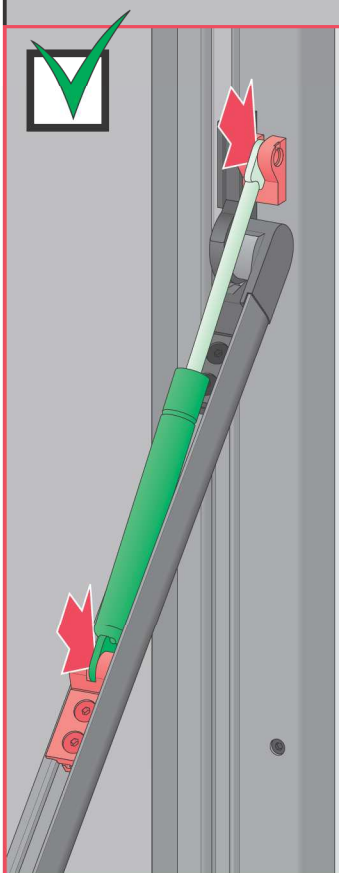
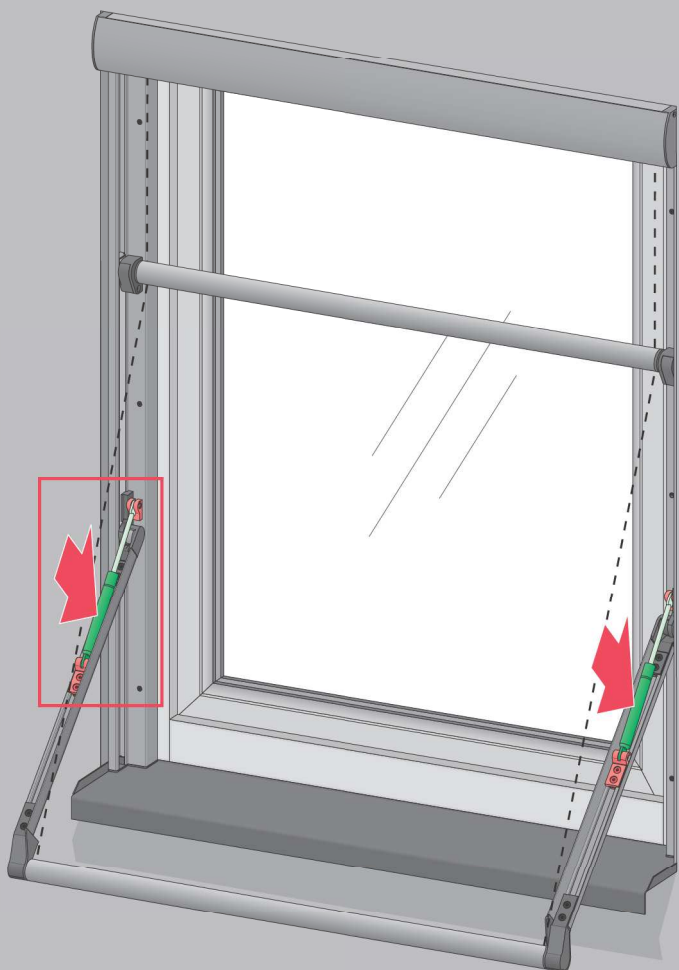
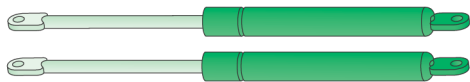
8



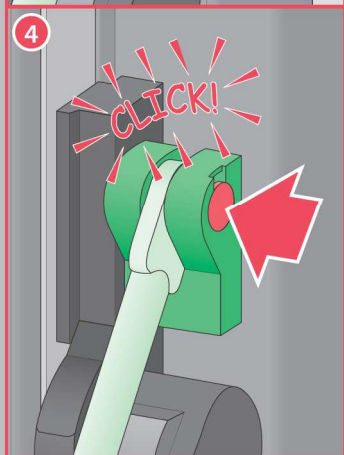
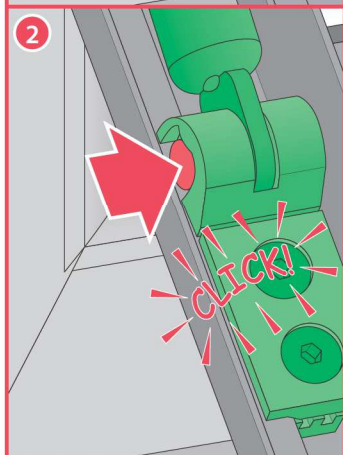
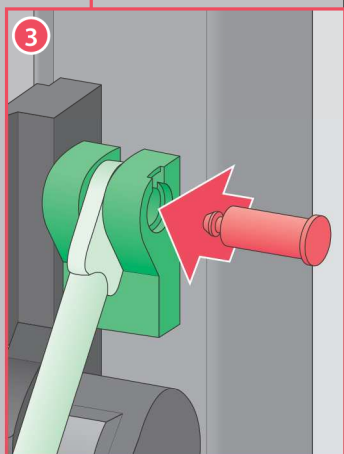
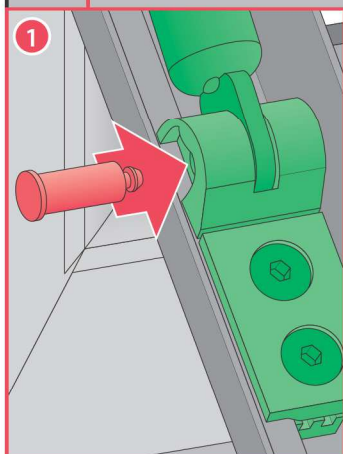
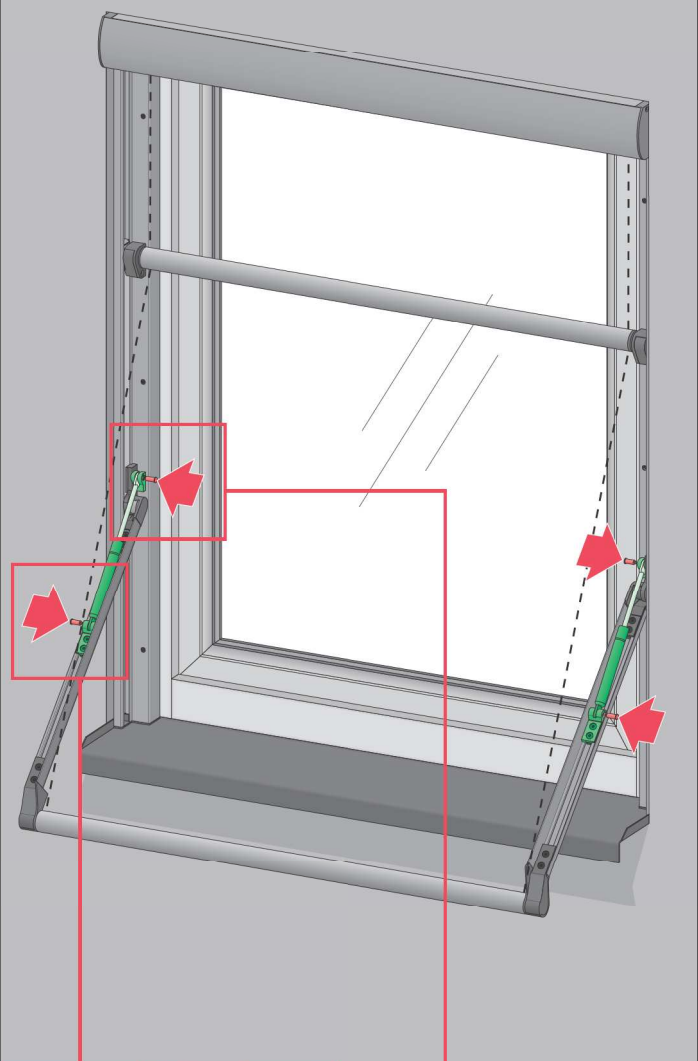
9



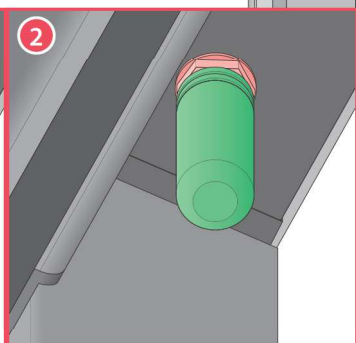
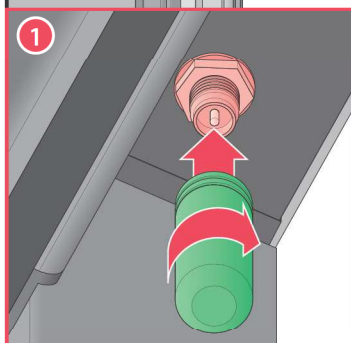
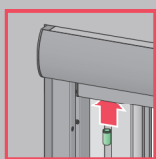
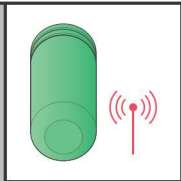
10a



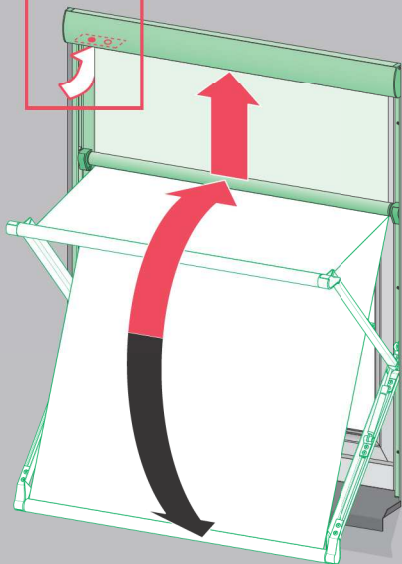
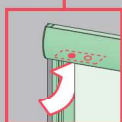
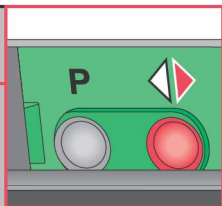
10b



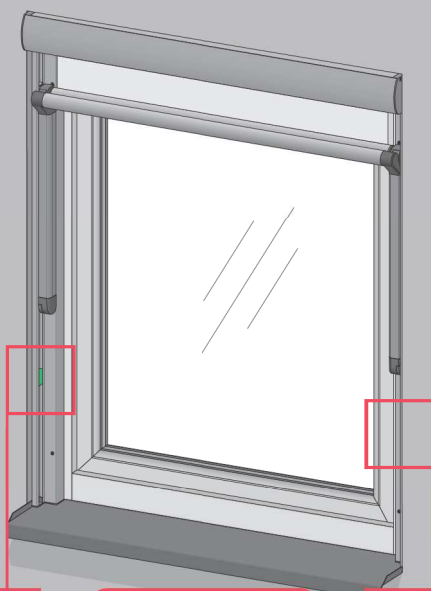
11



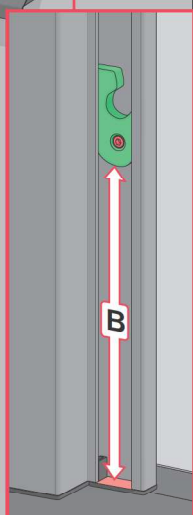
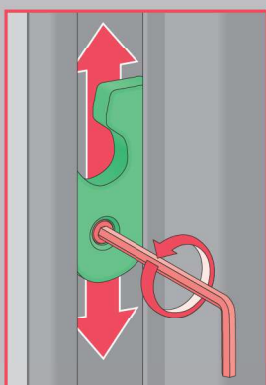
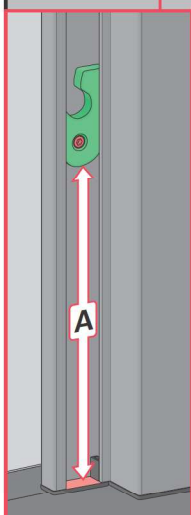
12



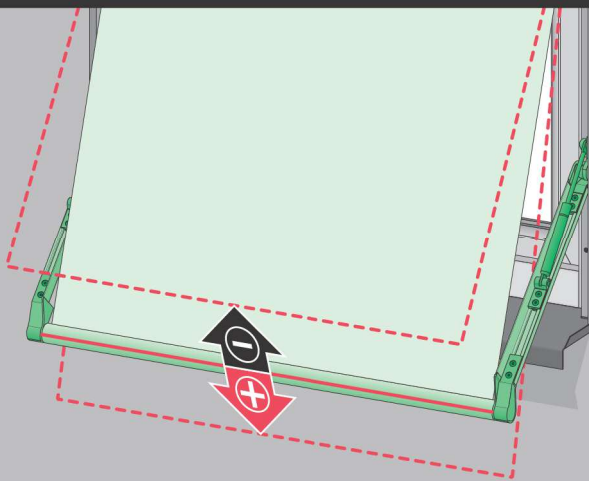
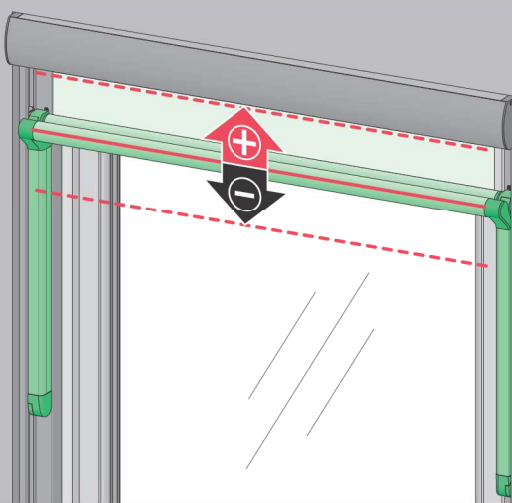
13



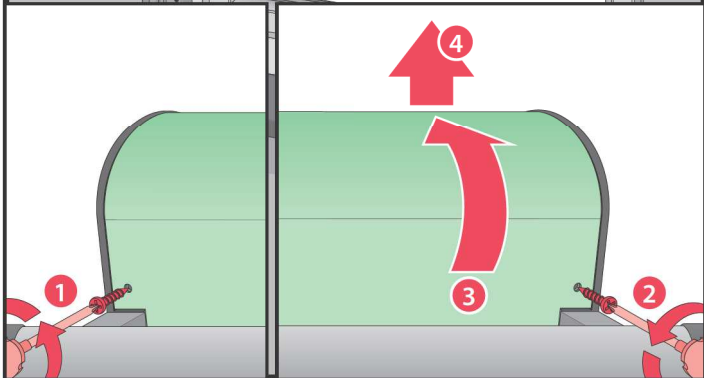
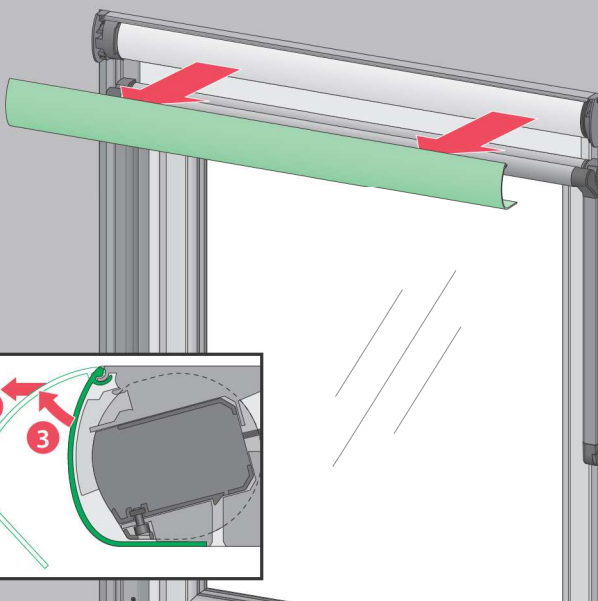
A=B



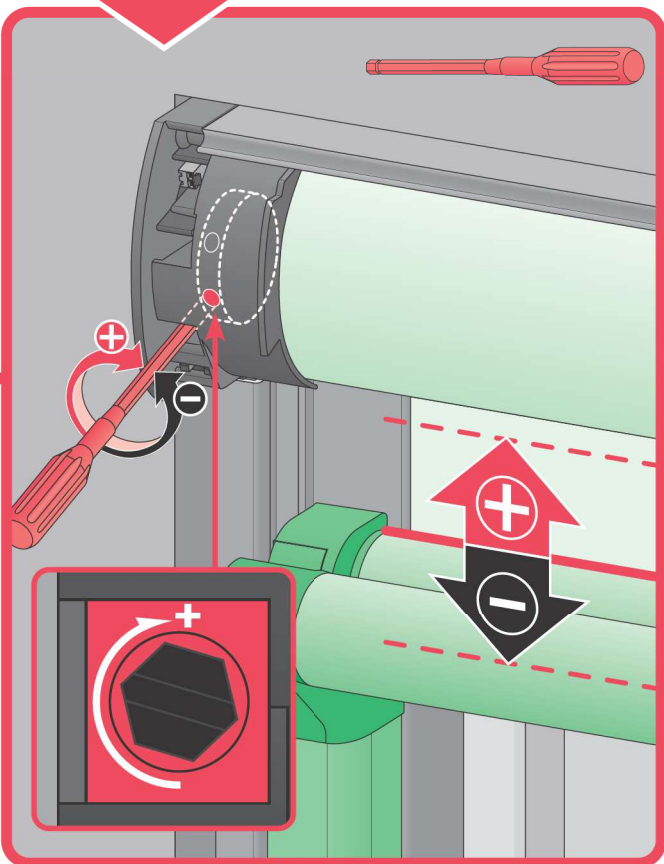
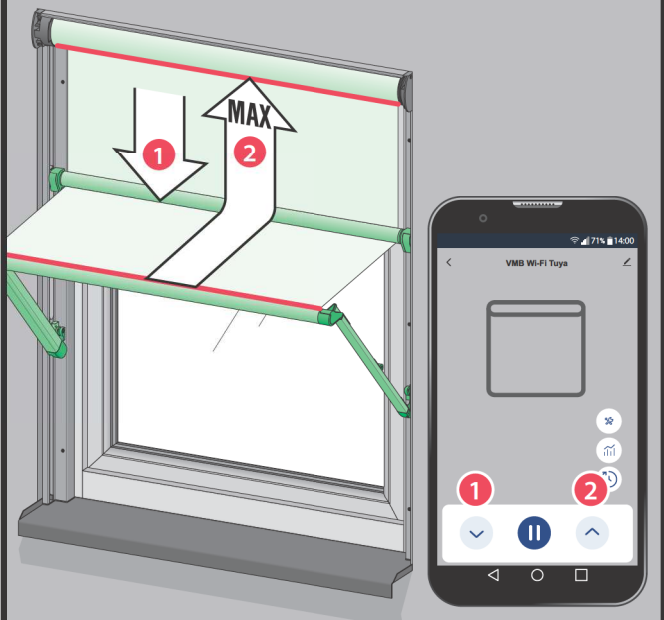
14



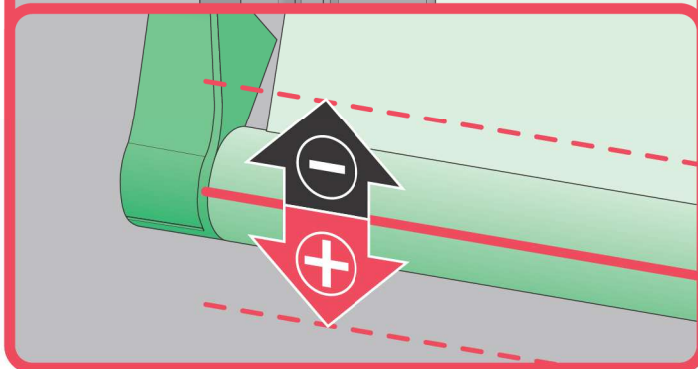
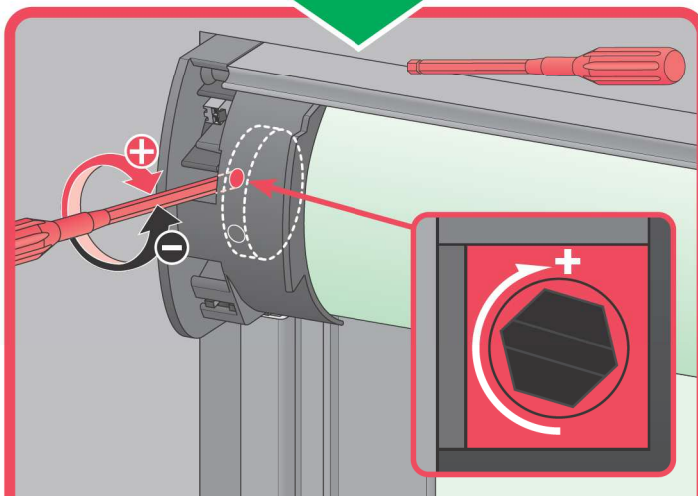
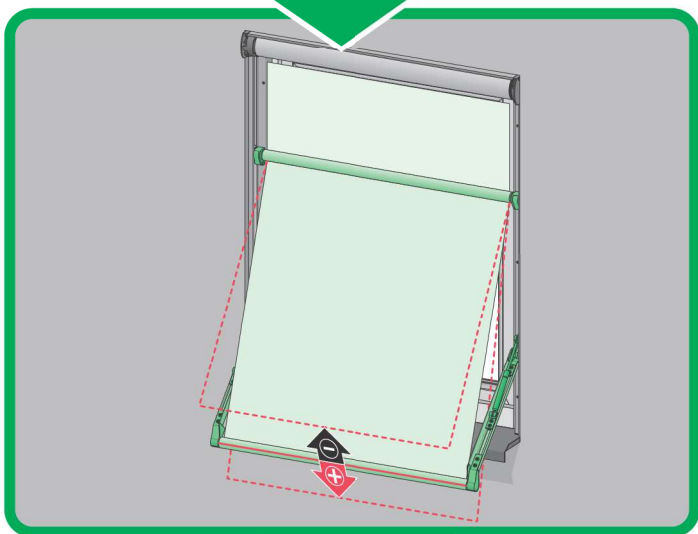
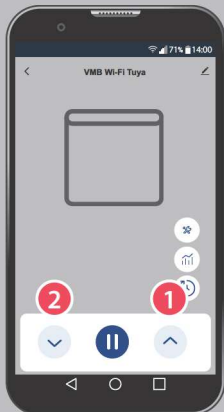
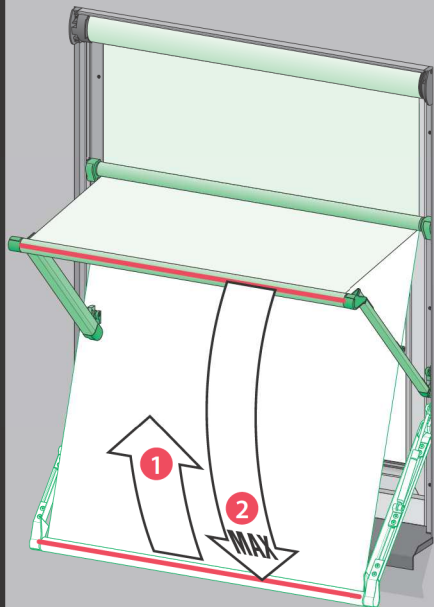
14a



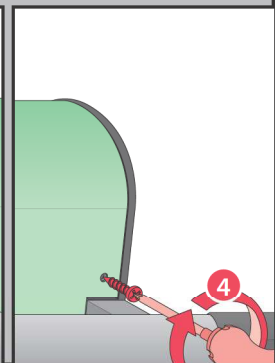
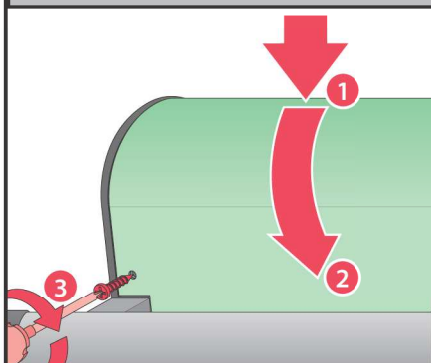
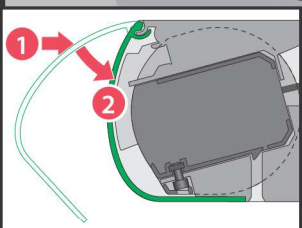
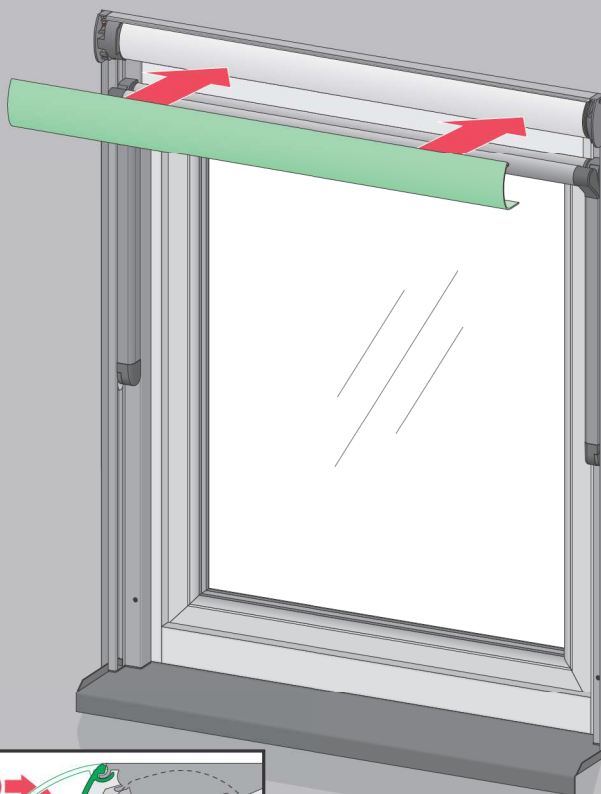
14b



14c



14d



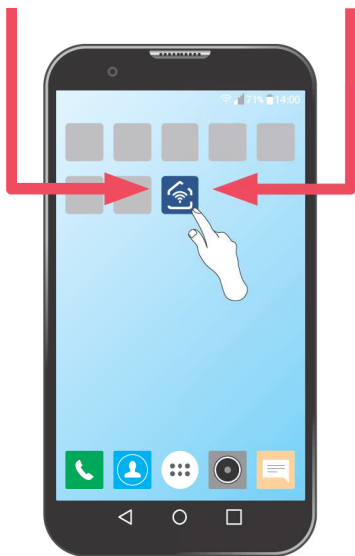
1



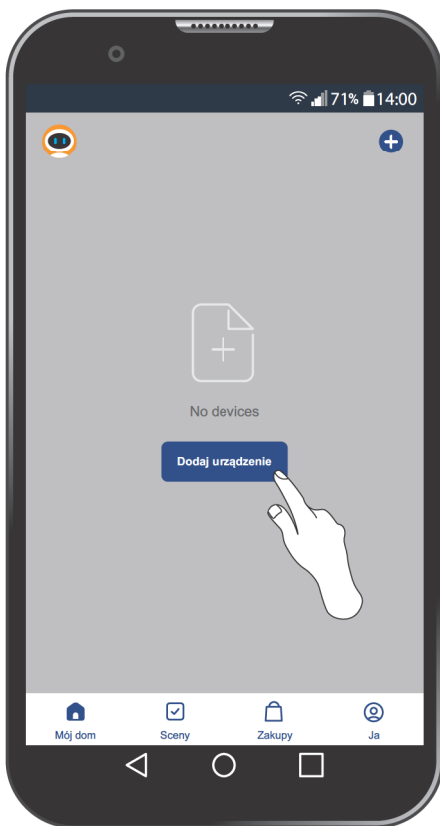
ANDROID
Fakro Smart



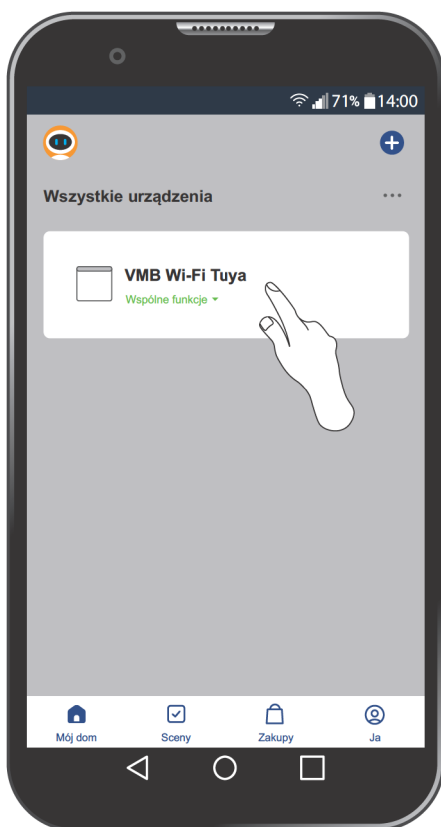
IOS
Fakro Smart



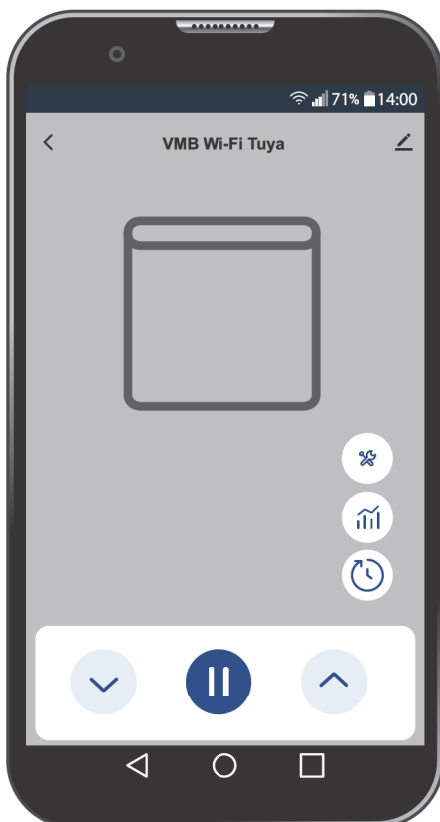
2



3



4



DE	Lesen Sie vor der Montage die Anweisungen NC9W7 „ORIGINALANLEITUNG 2/3 Montage- und Nutzungsregeln“
1a	Die seitlichen Führungsschienen demontieren.
1b	Die Seitenführungen mit der Kassette der Markisolette verbinden.
2a	Die Markisolette in die Fensteröffnung einbauen.
2b	Die Markisolette mit einem 15V-DC-Netzteil anschließen.
2c	Den korrekten Einbau der Markisolette kontrollieren.
3	Die Markisolette am Fenster oder an der Leibung festschrauben.
4a	Die zuvor demontierten Profile ordnungsgemäß in die Führungsschienen einsetzen.
4b	Die Profile an den Führungsschienen festschrauben.
5	Den Stoff der Markisolette etwas absenken.
6	Die Unterleiste in die Ausfallarme der Markisolette montieren
7a, 7b	Das Leitrohr montieren.
8	Die Sicherungsschnur abschneiden.
9	Das Markisentuch herunterlassen.
10a	Die Gasfedern in die Führungsschienen einsetzen.
10b	Die Sicherungsstifte eindrücken.
11	Eine Außenantenne montieren.
12	Die Funktion der Markisolette überprüfen.
13	Mittels Verriegelungen den Kippwinkel der unteren Leiste exakt einstellen.
14	Bei Bedarf eine Justierung der Endstellungen der Markisolette durchführen.

EN	Before installation, it is compulsory to read the NC9W7 „ORIGINAL INSTRUCTIONS 2/3 Installation and user manual“.
1a	Remove the side guide rails.
1b	Connect the side guide rails with the awning cassette.
2a	Place the roll-up awning in the window opening.
2b	Connect the roll-up awning to the network using the 15VDC power supply.
2c	Check the roll-up awning for correct installation.
3	Screw the roll-up awning to the window or to the lining.
4a	Place the previously dismantled profiles in guide rails.
4b	Screw profiles to guide rails.
5	Lower slightly the roll-up awning fabric.
6	Install the bottom bar in the roll-up awning arms.
7a, 7b	Install the tube that makes the fabric deflect.
8	Cut off the safety string.
9	Roll down the roll-up awning fabric.
10a	Place gas springs in guide rails.
10b	Push in the safety mandrels.
11	Install the external antenna.
12	Check the roll-up awning for correct operation.
13	Use the locks to set the bottom beam tilting moment.
14	If required, adjust the end positions of the roll-up awning.

PL	Przed montażem należy zapoznać się z treścią instrukcji NC9W7 „INSTRUKCJA ORYGINALNA 2/3 Zasady montażu i użytkowania“.
1a	Zdemontować prowadnice boczne.
1b	Połączyć prowadnice boczne z kasetą markizolety.
2a	Umieścić markizoletę w otworze okiennym.
2b	Podłączyć markizoletę do sieci za pomocą zasilacza 15VDC.
2c	Sprawdzić poprawność montażu markizolety.
3	Przykręcić markizoletę do okna lub do szpalety.
4a	Umieścić zdemontowane wcześniej profile w prowadnicach.
4b	Przykręcić profile do prowadnic.
5	Opuścić nieco tkaninę markizolety.
6	Zamontować belkę dolną w ramionach markizolety.
7a, 7b	Zamontować rurę przewojową.
8	Odciąć sznurek zabezpieczający.
9	Opuścić tkaninę markizolety.
10a	Umieścić sprężyny gazowe w prowadnicach.
10b	Wcisnąć trzpień zabezpieczający.
11	Zamontować antenę zewnętrzną.
12	Sprawdzić działanie markizolety.
13	Za pomocą blokad ustawić moment odchylania belki dolnej.
14	W razie potrzeby przeprowadzić regulację pozycji krańcowych markizolety.

BG	Производител и Продавач не носят отговорност за неспазване на съответните закони, строителни норми и изисквания за безопасност от потребителя на продукта, архитекта, монтажника или собственика на сградата.	LT	Gamintojas ir pardavėjas neprisiima jokios atsakomybės už tai, kad gaminio naudotojas, architektas, montuotojas ar pastato savininkas nesilaiko galiojančiu įstatymu, taisyklėmis ir saugos reikalavimu.
CZ	Výrobce ani prodávce nenesou žádnou odpovědnost za nedodržení příslušných platných zákonů, stavebních předpisů a bezpečnostních požadavků uživatelem výrobku, architektem, montážníkem nebo vlastníkem budovy.	LV	Rabotājs un pārdevējs neņemas atbildību par likumu, noteikumu un drošības prasību neievērošanu no produkta lietotāja, arhitekta, uzstādītāja vai ēkas īpašnieka puses.
DE	Hersteller und Verkäufer übernehmen keine Haftung für Nichtbeachtung entsprechender Rechts- und Bauvorschriften sowie Sicherheitsanforderungen seitens Produktbenutzers, Architekten, Monteurs oder Gebäudebesitzers.	NL	De fabrikant en verkoper zijn niet aansprakelijk voor gevolgen bij het niet opvolgen van toepasselijke wetten, bouwbesluiten en veiligheidsvoorschriften door de gebruiker van het product, de architect, de installateur of de eigenaar van het gebouw.
EE	Tootja ja jaemüüja ei vastuta toote kasutaja, arhitekti, paigaldaja või hoone omaniku poolt kehtivate seaduste, määruste ja ohutusnõuete mittejärgmise eest.	PL	Producent i Sprzedawca nie ponosi żadnej odpowiedzialności za nieprześcieżenie stosownych przepisów prawa, przepisów budowlanych i wymogów bezpieczeństwa przez użytkownika produktu, architekta, montażystę lub właściciela budynku.
ES	El fabricante y el vendedor no tienen ninguna responsabilidad por el incumplimiento de la ley vigente, normas de construcción y exigencias de seguridad por parte del usuario del producto, arquitecto, instalador o el propietario del edificio.	PT	O fabricante e o vendedor não tem nenhuma responsabilidade pelo o não cumprimento da lei, códigos de construção e as exigências de segurança por parte do usuário do produto, arquiteto, instalador ou proprietário do edifício.
FR	Le fabricant et le revendeur ne prend aucune responsabilité de ne pas respecter les lois applicables, les règlements sur les bâtiments et les exigences de sécurité par l'utilisateur du produit, l'architecte, l'installateur ou le propriétaire du bâtiment.	RO	Nici producătorul, nici distribuitorul nu își vor asuma niciun fel de răspundere pentru nerespectarea legilor în vigoare, a legilor din domeniul construcțiilor sau a măsurilor de siguranță impuse utilizatorilor produsului, arhitecților, montajistilor sau proprietarilor clădirii.
GB	Manufacturer and Seller shall bear no liability for failure to comply with the applicable laws, building codes and safety requirements by the user of the product, architect, fitter or owner of the building.	RU	В случае неисполнения архитектором, монтажником или владельцем здания строительных правил и норм безопасности ответственность с производителя и продавца снимается.
HU	A Gyártó és a Forgalmazó nem vállal semmiféle felelősséget a vonatkozó törvényi, építési és biztonsági előírások termékfelhasználói, építész, beszállítómester vagy épülettulajdonos általi be nem tartásáért.	SI	Proizvajalec in prodajalec ne prevzemata odgovornosti za neupoštevanje ustreznih pravil in gradbenih predpisov ter varnostnih zahtev s strani uporabnika izdelka, projektanta, montažerja ali lastnika objekta.
IT	Il Produttore e il Rivenditore non potranno essere ritenuti responsabili per il mancato rispetto, da parte dell'utente del prodotto, del progettista, dell'installatore o del proprietario dell'edificio, delle leggi vigenti, nonché dei regolamenti edilizi e di quelli relativi alla sicurezza.	SK	Výrobca a predávca nenesú žiadnu zodpovednosť za nedodržanie príslušných ustanovení zákona, stavebných predpisov a bezpečnostných požiadaviek užívateľom výrobku, architektom, montérom alebo majiteľom objektu.